

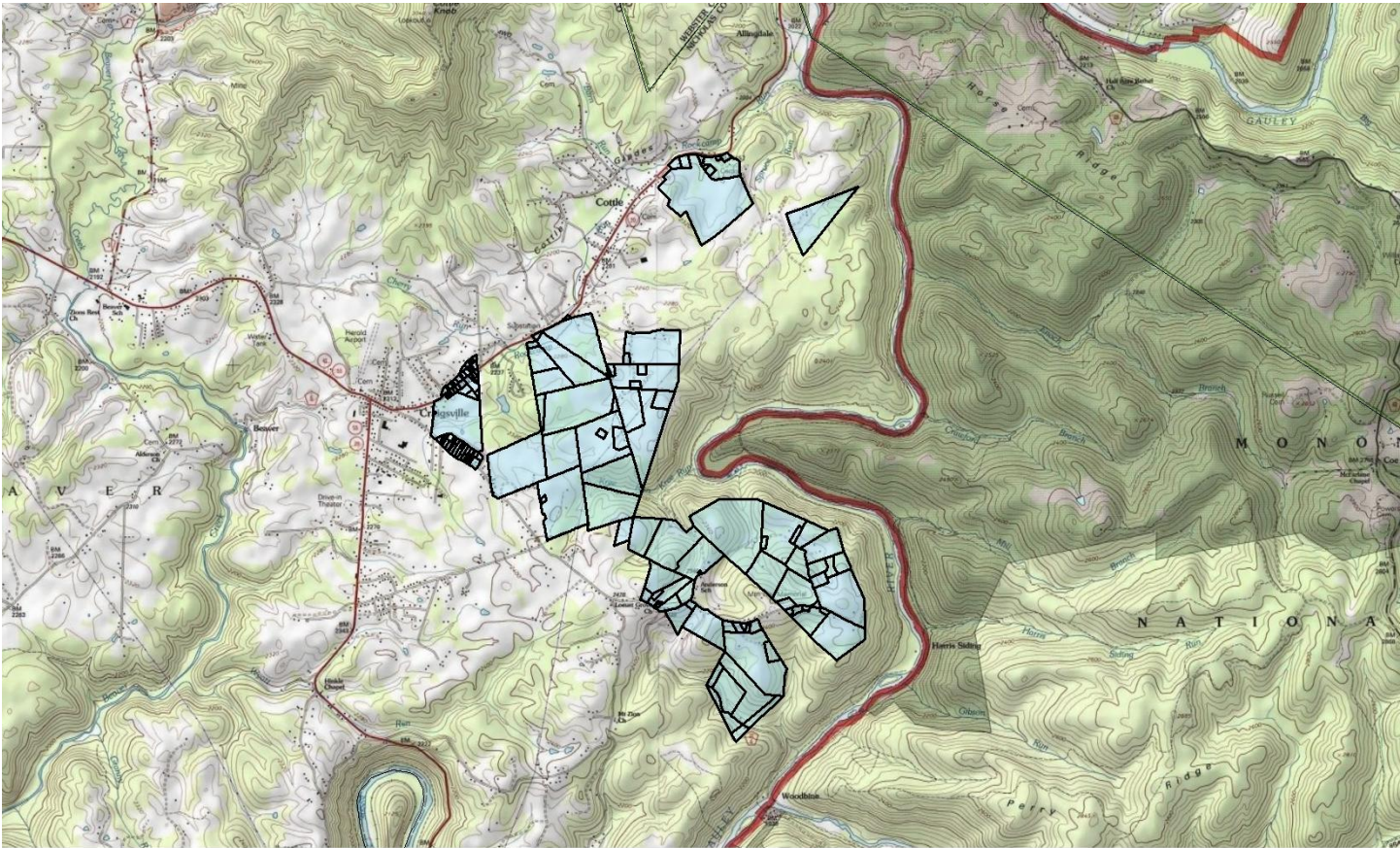
34-01-9999-0101-5200-0000

64.35 acres, minerals, Little Beaver Creek

Nicholas/Beaver

DISCLAIMER: To better represent our property for marketability purposes, Elemental Resources uses ArcGIS to compile information from multiple sources. However, these maps and other information are only as accurate as the source of such maps and other information. Furthermore some of the tax maps and shape files might be outdated and therefore may not reflect the most current information. Elemental Resources makes no warranty, representation, or guarantee of any kind regarding either any maps or other information provided herein or the sources of such maps or other information. Elemental Resources specifically disclaims all representations or warranties expressed or implied, including without limitation, the implied warranties of merchantability and fitness for a particular purpose. Elemental Resources assumes no liability either for any errors, omissions, or inaccuracies in the information provided, regardless of the cause of such or for any decision made, action not taken by the user in reliance upon any maps or information provided herein. Users of the information displayed in this map are strongly cautioned to verify all information before making any decision.

ELEMENTAL RESOURCES LLC 304-342-2192 1018 Kanawha Blvd. E, Ste 309, Charleston, WV 25301 www.elementalresources.net

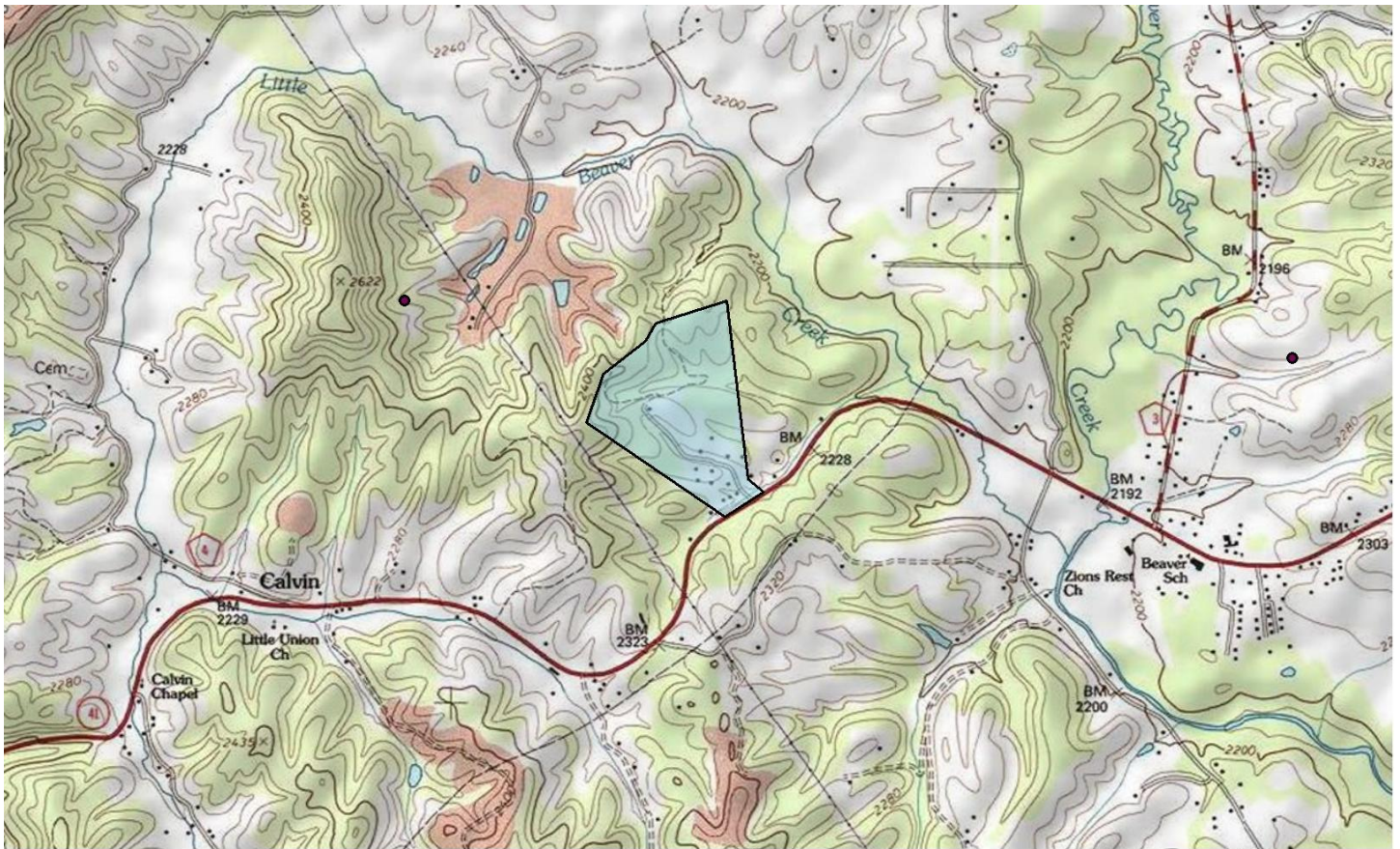


34-01-9999-0106-8800-0000

630.25 acres, coal, Gauley River

Nicholas/Beaver

DISCLAIMER: To better represent our property for marketability purposes, Elemental Resources uses ArcGIS to compile information from multiple sources. However, these maps and other information are only as accurate as the source of such maps and other information. Furthermore some of the tax maps and shape files might be outdated and therefore may not reflect the most current information. Elemental Resources makes no warranty, representation, or guarantee of any kind regarding either any maps or other information provided herein or the sources of such maps or other information. Elemental Resources specifically disclaims all representations or warranties expressed or implied, including without limitation, the implied warranties of merchantability and fitness for a particular purpose. Elemental Resources assumes no liability either for any errors, omissions, or inaccuracies in the information provided, regardless of the cause of such or for any decision made, action not taken by the user in reliance upon any maps or information provided herein. Users of the information displayed in this map are strongly cautioned to verify all information before making any decision.

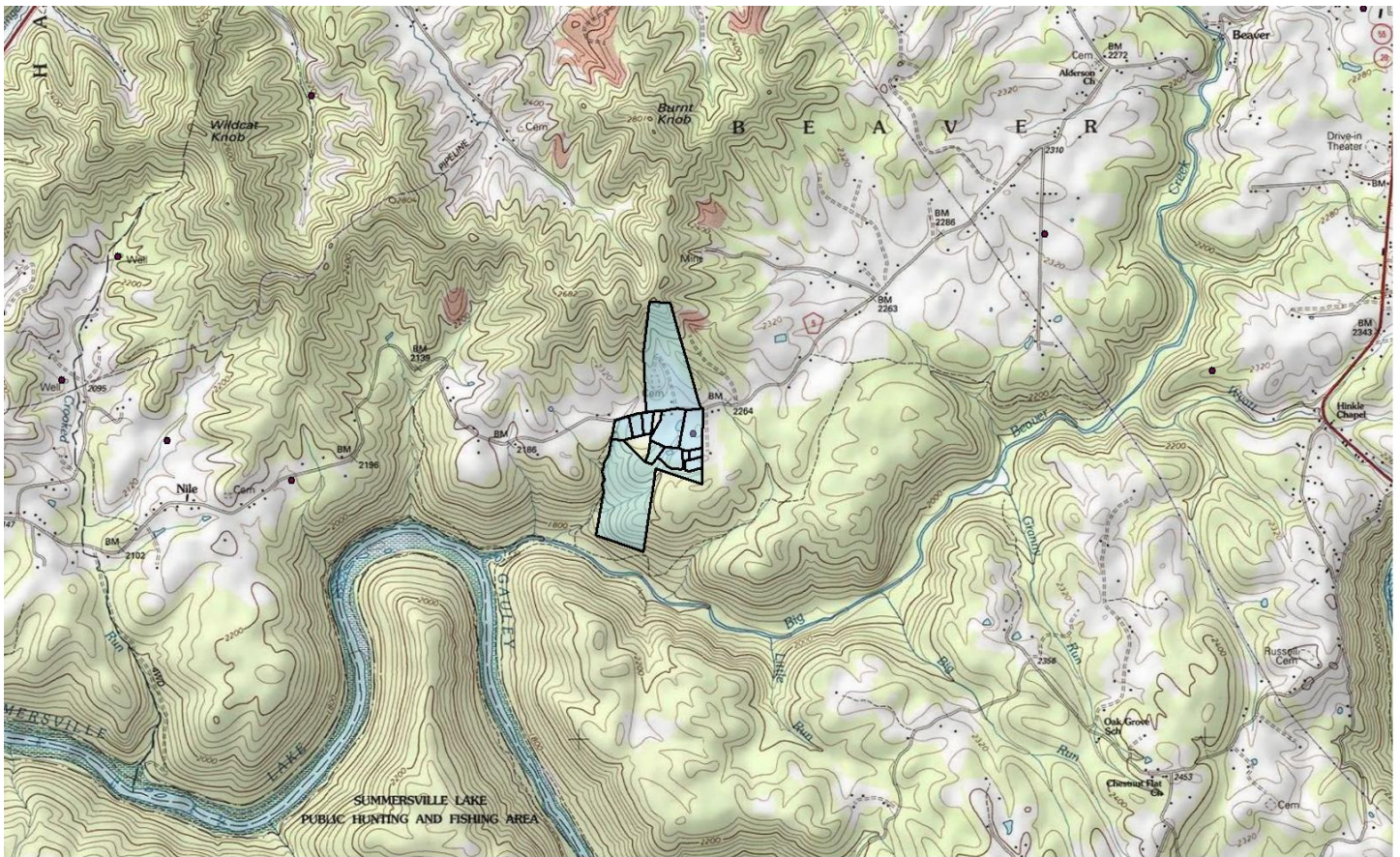


34-01-9999-0116-2400-0000

73 acres, coal (PRL and above), Big & Little Beaver

Nicholas/Beaver

DISCLAIMER: To better represent our property for marketability purposes, Elemental Resources uses ArcGIS to compile information from multiple sources. However, these maps and other information are only as accurate as the source of such maps and other information. Furthermore some of the tax maps and shape files might be outdated and therefore may not reflect the most current information. Elemental Resources makes no warranty, representation, or guarantee of any kind regarding either any maps or other information provided herein or the sources of such maps or other information. Elemental Resources specifically disclaims all representations or warranties expressed or implied, including without limitation, the implied warranties of merchantability and fitness for a particular purpose. Elemental Resources assumes no liability either for any errors, omissions, or inaccuracies in the information provided, regardless of the cause of such or for any decision made, action not taken by the user in reliance upon any maps or information provided herein. Users of the information displayed in this map are strongly cautioned to verify all information before making any decision.

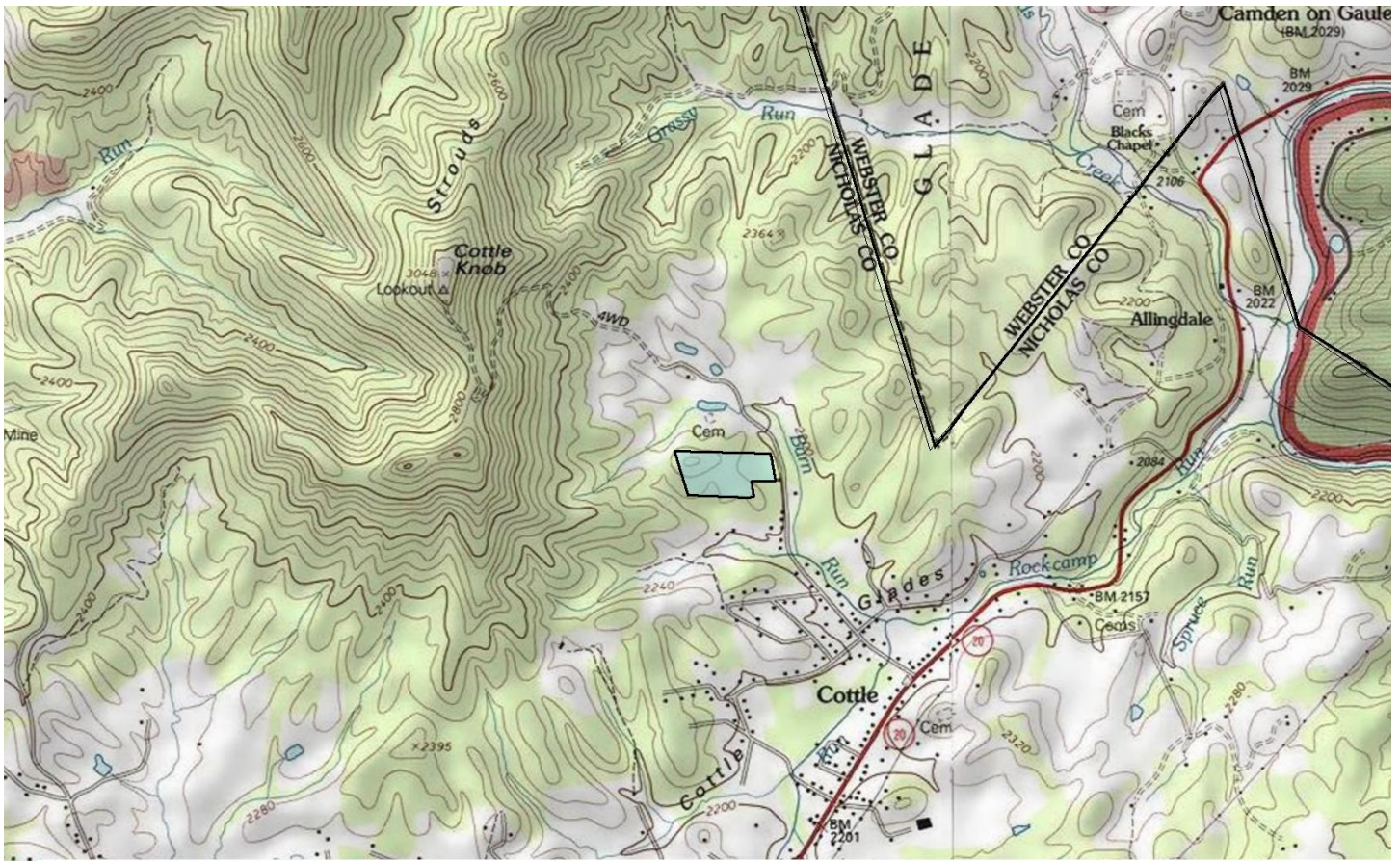


34-01-9999-0127-0800-0000

5 acres, SEW coal, Webster Road

Nicholas/Beaver

DISCLAIMER: To better represent our property for marketability purposes, Elemental Resources uses ArcGIS to compile information from multiple sources. However, these maps and other information are only as accurate as the source of such maps and other information. Furthermore some of the tax maps and shape files might be outdated and therefore may not reflect the most current information. Elemental Resources makes no warranty, representation, or guarantee of any kind regarding either any maps or other information provided herein or the sources of such maps or other information. Elemental Resources specifically disclaims all representations or warranties expressed or implied, including without limitation, the implied warranties of merchantability and fitness for a particular purpose. Elemental Resources assumes no liability either for any errors, omissions, or inaccuracies in the information provided, regardless of the cause of such or for any decision made, action not taken by the user in reliance upon any maps or information provided herein. Users of the information displayed in this map are strongly cautioned to verify all information before making any decision.

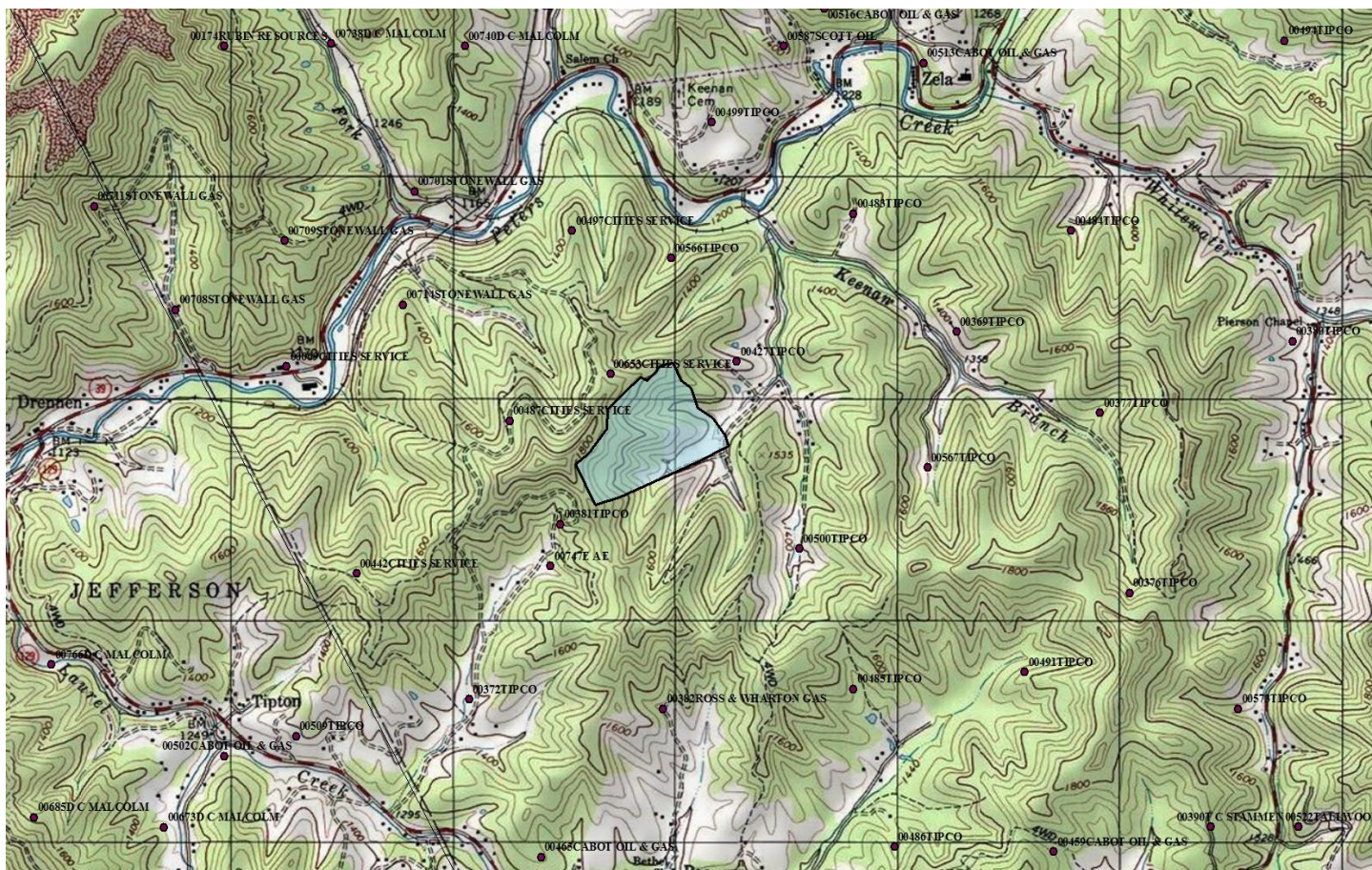


34-01-9999-0136-6000-0000

14 acres, minerals, near Cottle

Nicholas/Beaver

DISCLAIMER: To better represent our property for marketability purposes, Elemental Resources uses ArcGIS to compile information from multiple sources. However, these maps and other information are only as accurate as the source of such maps and other information. Furthermore some of the tax maps and shape files might be outdated and therefore may not reflect the most current information. Elemental Resources makes no warranty, representation, or guarantee of any kind regarding either any maps or other information provided herein or the sources of such maps or other information. Elemental Resources specifically disclaims all representations or warranties expressed or implied, including without limitation, the implied warranties of merchantability and fitness for a particular purpose. Elemental Resources assumes no liability either for any errors, omissions, or inaccuracies in the information provided, regardless of the cause of such or for any decision made, action not taken by the user in reliance upon any maps or information provided herein. Users of the information displayed in this map are strongly cautioned to verify all information before making any decision.



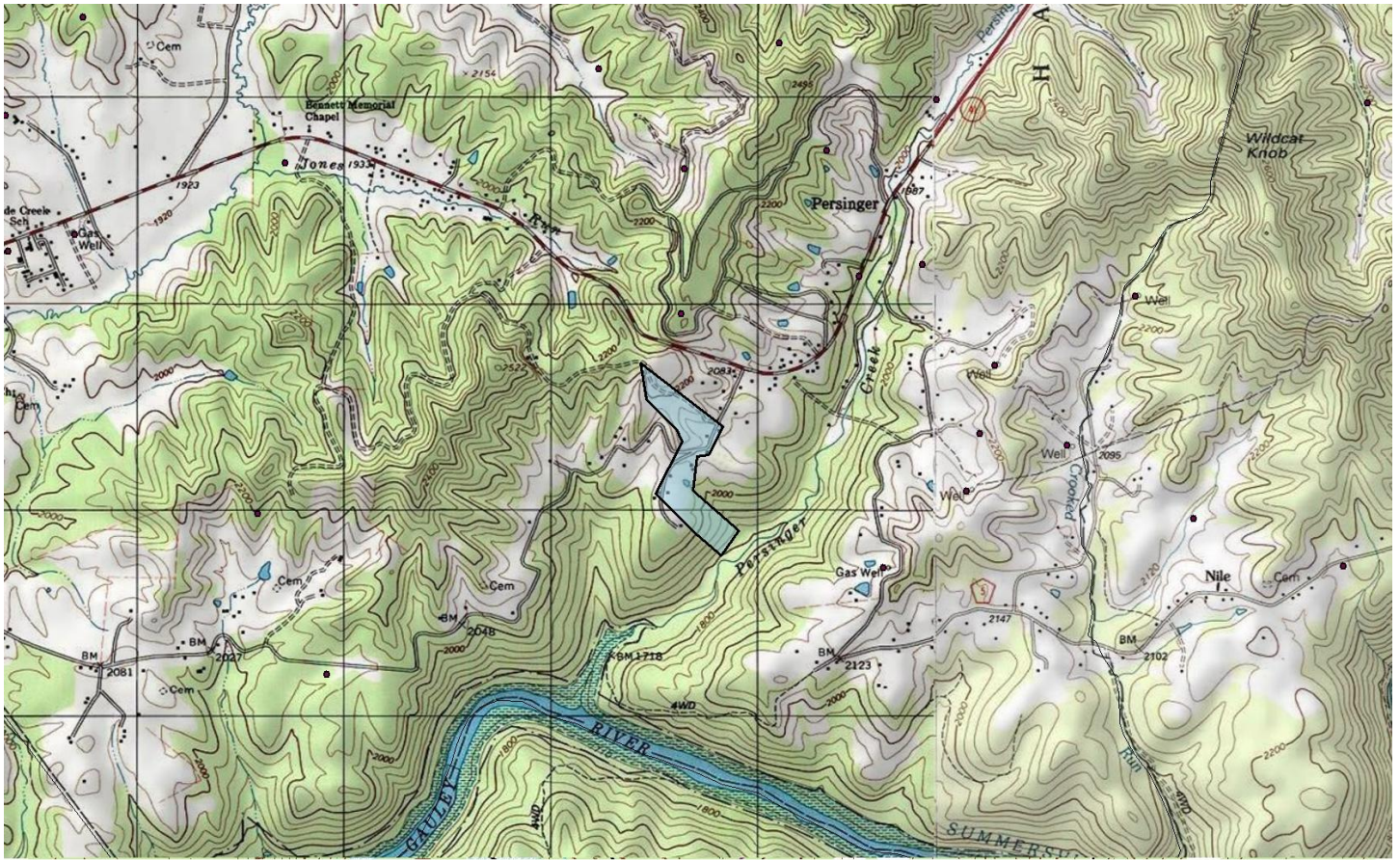
34-02-9999-0273-7000-0000

54 acres, minerals, Keenan Branch

Nicholas/Grant

DISCLAIMER: To better represent our property for marketability purposes, Elemental Resources uses ArcGIS to compile information from multiple sources. However, these maps and other information are only as accurate as the source of such maps and other information. Furthermore some of the tax maps and shape files might be outdated and therefore may not reflect the most current information. Elemental Resources makes no warranty, representation, or guarantee of any kind regarding either any maps or other information provided herein or the sources of such maps or other information. Elemental Resources specifically disclaims all representations or warranties expressed or implied, including without limitation, the implied warranties of merchantability and fitness for a particular purpose. Elemental Resources assumes no liability either for any errors, omissions, or inaccuracies in the information provided, regardless of the cause of such or for any decision made, action not taken by the user in reliance upon any maps or information provided herein. Users of the information displayed in this map are strongly cautioned to verify all information before making any decision.

ELEMENTAL RESOURCES LLC 304-342-2192 1018 Kanawha Blvd. E, Ste 309, Charleston, WV 25301 www.elementalresources.net

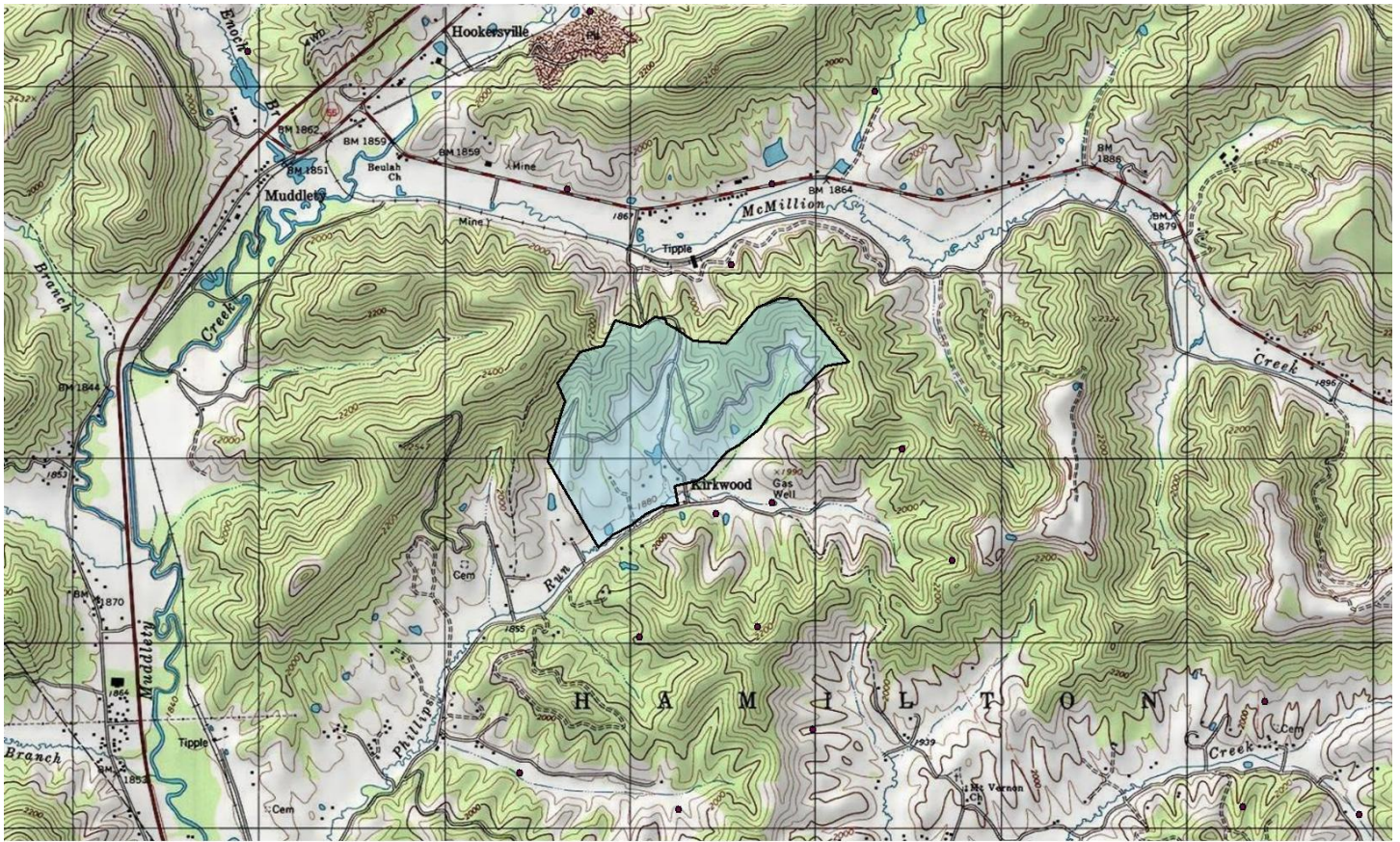


34-03-9999-0316-6200-0000

64.01 acres, minerals, Persinger Cr.

Nicholas/Hamilton

DISCLAIMER: To better represent our property for marketability purposes, Elemental Resources uses ArcGIS to compile information from multiple sources. However, these maps and other information are only as accurate as the source of such maps and other information. Furthermore some of the tax maps and shape files might be outdated and therefore may not reflect the most current information. Elemental Resources makes no warranty, representation, or guarantee of any kind regarding either any maps or other information provided herein or the sources of such maps or other information. Elemental Resources specifically disclaims all representations or warranties expressed or implied, including without limitation, the implied warranties of merchantability and fitness for a particular purpose. Elemental Resources assumes no liability either for any errors, omissions, or inaccuracies in the information provided, regardless of the cause of such or for any decision made, action not taken by the user in reliance upon any maps or information provided herein. Users of the information displayed in this map are strongly cautioned to verify all information before making any decision.



34-03-9999-0316-7600-0000

275.3 acres, coal, Phillips Run

Nicholas/Hamilton

DISCLAIMER: To better represent our property for marketability purposes, Elemental Resources uses ArcGIS to compile information from multiple sources. However, these maps and other information are only as accurate as the source of such maps and other information. Furthermore some of the tax maps and shape files might be outdated and therefore may not reflect the most current information. Elemental Resources makes no warranty, representation, or guarantee of any kind regarding either any maps or other information provided herein or the sources of such maps or other information. Elemental Resources specifically disclaims all representations or warranties expressed or implied, including without limitation, the implied warranties of merchantability and fitness for a particular purpose. Elemental Resources assumes no liability either for any errors, omissions, or inaccuracies in the information provided, regardless of the cause of such or for any decision made, action not taken by the user in reliance upon any maps or information provided herein. Users of the information displayed in this map are strongly cautioned to verify all information before making any decision.

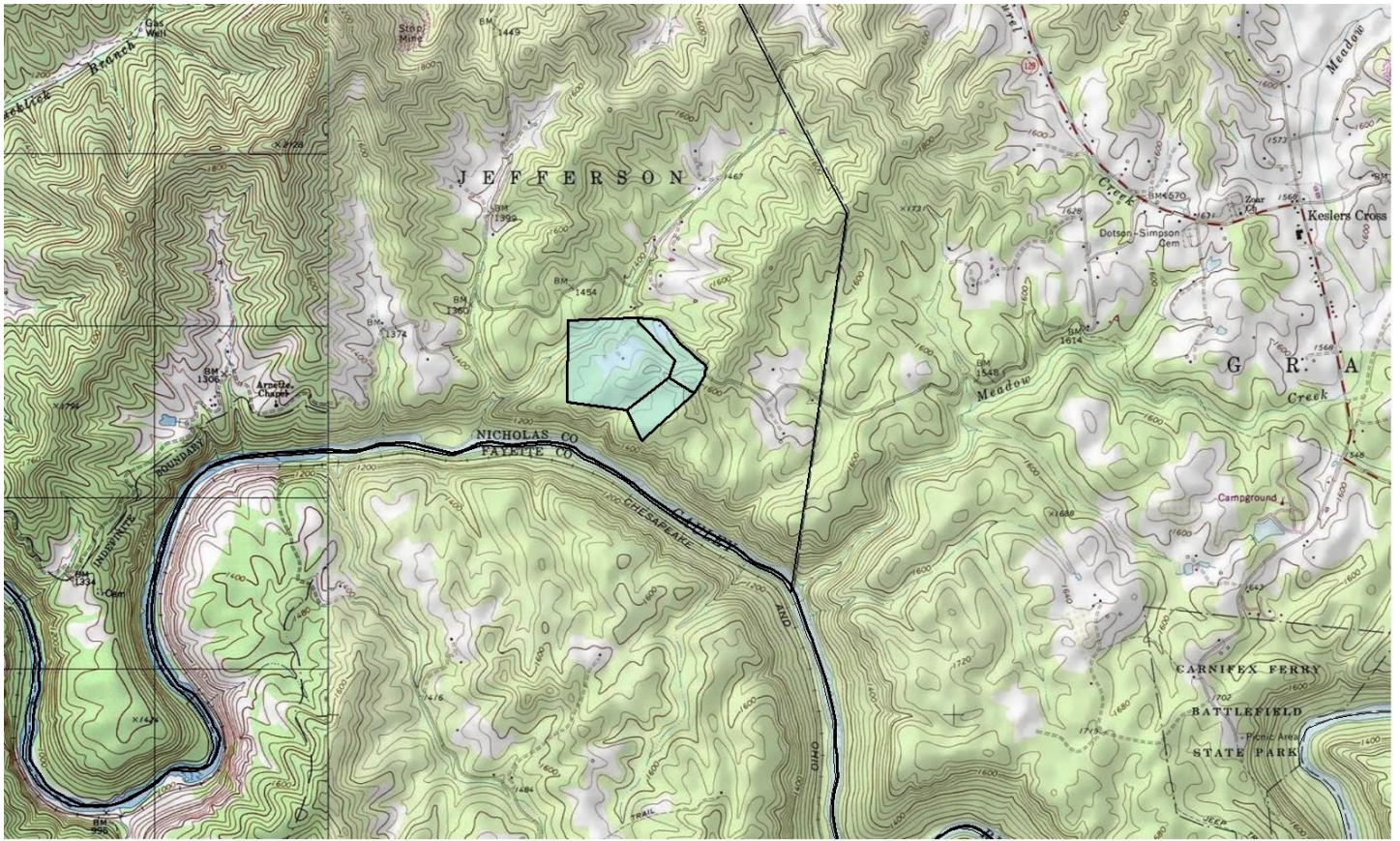


34-03-9999-0316-8800-0000

10.5 acres, coal, Phillips Run

Nicholas/Hamilton

DISCLAIMER: To better represent our property for marketability purposes, Elemental Resources uses ArcGIS to compile information from multiple sources. However, these maps and other information are only as accurate as the source of such maps and other information. Furthermore some of the tax maps and shape files might be outdated and therefore may not reflect the most current information. Elemental Resources makes no warranty, representation, or guarantee of any kind regarding either any maps or other information provided herein or the sources of such maps or other information. Elemental Resources specifically disclaims all representations or warranties expressed or implied, including without limitation, the implied warranties of merchantability and fitness for a particular purpose. Elemental Resources assumes no liability either for any errors, omissions, or inaccuracies in the information provided, regardless of the cause of such or for any decision made, action not taken by the user in reliance upon any maps or information provided herein. Users of the information displayed in this map are strongly cautioned to verify all information before making any decision.

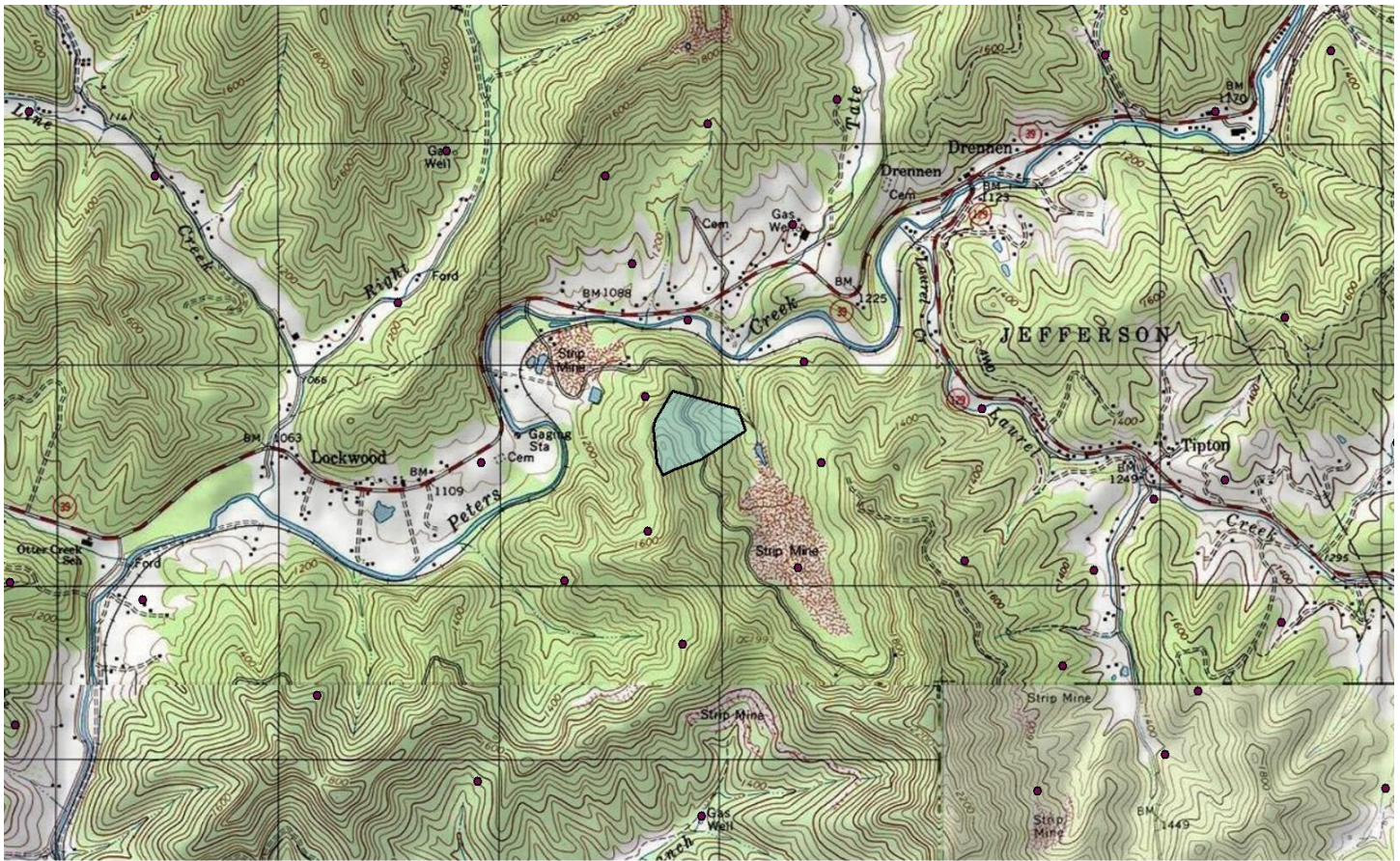


34-04-9999-0454-2300-0000

153 acres, coal, Gauley River

Nicholas/Jefferson

DISCLAIMER: To better represent our property for marketability purposes, Elemental Resources uses ArcGIS to compile information from multiple sources. However, these maps and other information are only as accurate as the source of such maps and other information. Furthermore some of the tax maps and shape files might be outdated and therefore may not reflect the most current information. Elemental Resources makes no warranty, representation, or guarantee of any kind regarding either any maps or other information provided herein or the sources of such maps or other information. Elemental Resources specifically disclaims all representations or warranties expressed or implied, including without limitation, the implied warranties of merchantability and fitness for a particular purpose. Elemental Resources assumes no liability either for any errors, omissions, or inaccuracies in the information provided, regardless of the cause of such or for any decision made, action not taken by the user in reliance upon any maps or information provided herein. Users of the information displayed in this map are strongly cautioned to verify all information before making any decision.

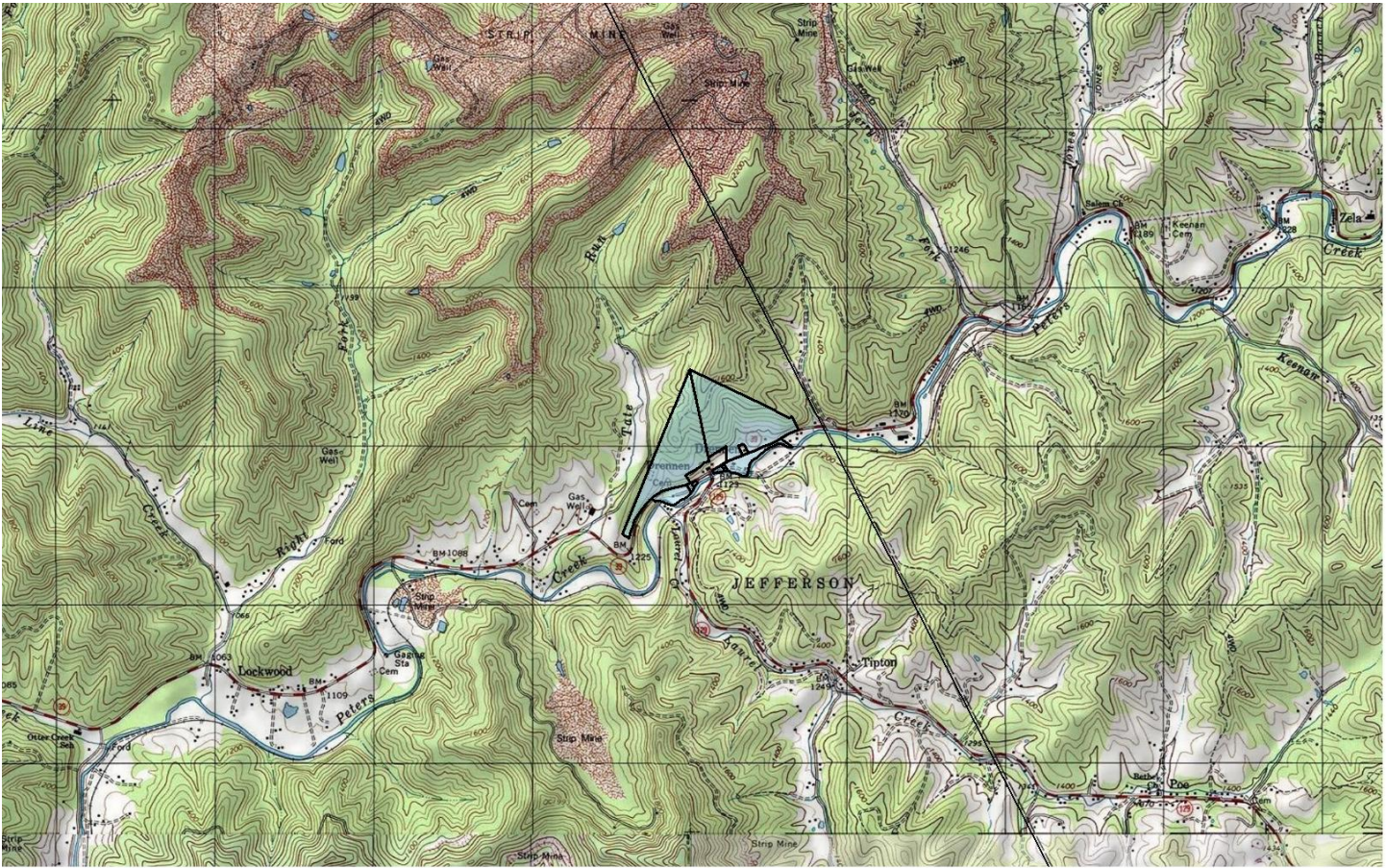


34-04-9999-0460-0220-0000

24 acres, coal, Laurel Cr.

Nicholas/Jefferson

DISCLAIMER: To better represent our property for marketability purposes, Elemental Resources uses ArcGIS to compile information from multiple sources. However, these maps and other information are only as accurate as the source of such maps and other information. Furthermore some of the tax maps and shape files might be outdated and therefore may not reflect the most current information. Elemental Resources makes no warranty, representation, or guarantee of any kind regarding either any maps or other information provided herein or the sources of such maps or other information. Elemental Resources specifically disclaims all representations or warranties expressed or implied, including without limitation, the implied warranties of merchantability and fitness for a particular purpose. Elemental Resources assumes no liability either for any errors, omissions, or inaccuracies in the information provided, regardless of the cause of such or for any decision made, action not taken by the user in reliance upon any maps or information provided herein. Users of the information displayed in this map are strongly cautioned to verify all information before making any decision.



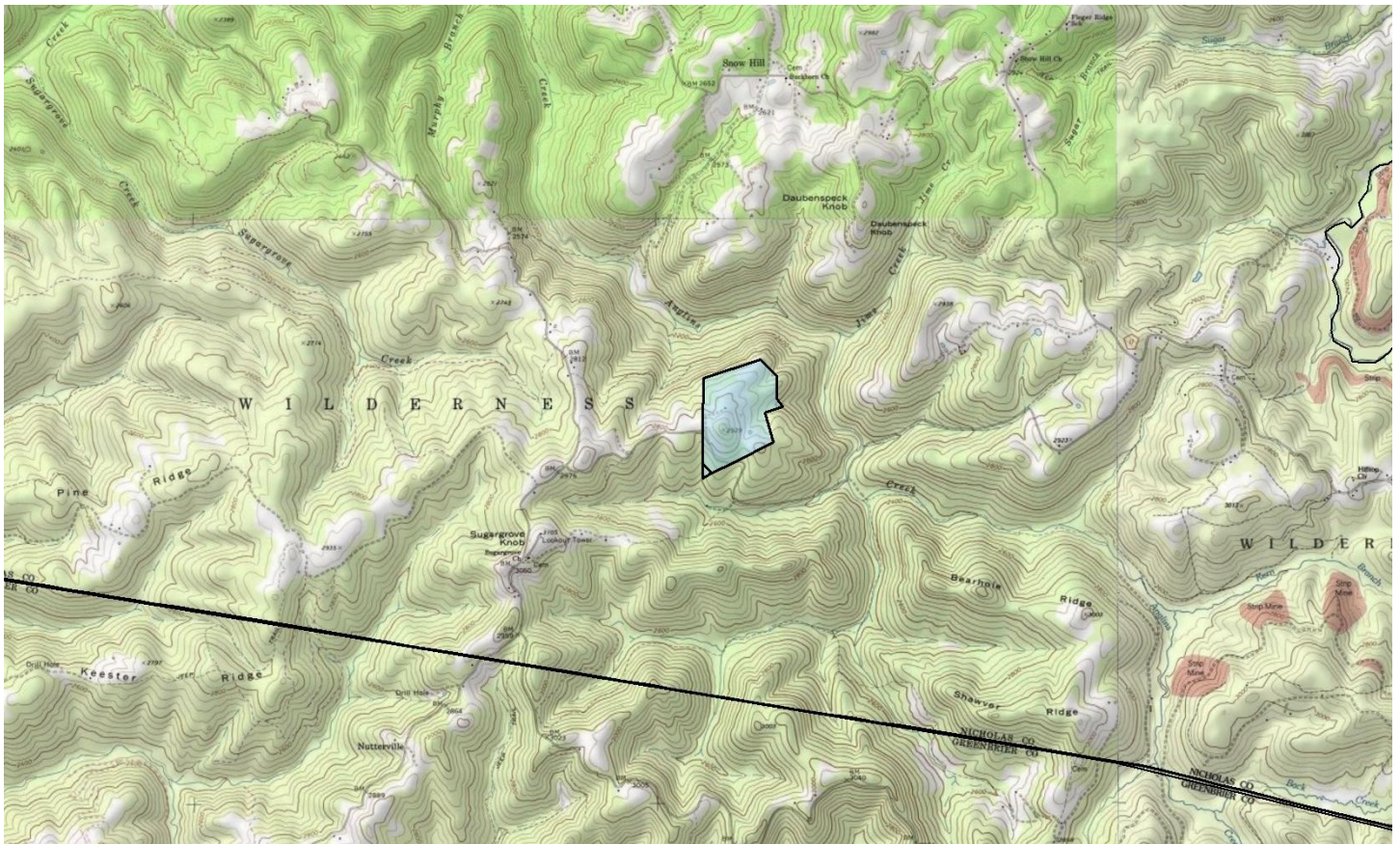
34-04-9999-0464-1050-0000

18 acres, coal (EAG only), Peters Creek

Nicholas/Jefferson

DISCLAIMER: To better represent our property for marketability purposes, Elemental Resources uses ArcGIS to compile information from multiple sources. However, these maps and other information are only as accurate as the source of such maps and other information. Furthermore some of the tax maps and shape files might be outdated and therefore may not reflect the most current information. Elemental Resources makes no warranty, representation, or guarantee of any kind regarding either any maps or other information provided herein or the sources of such maps or other information. Elemental Resources specifically disclaims all representations or warranties expressed or implied, including without limitation, the implied warranties of merchantability and fitness for a particular purpose. Elemental Resources assumes no liability either for any errors, omissions, or inaccuracies in the information provided, regardless of the cause of such or for any decision made, action not taken by the user in reliance upon any maps or information provided herein. Users of the information displayed in this map are strongly cautioned to verify all information before making any decision.

ELEMENTAL RESOURCES LLC 304-342-2192 1018 Kanawha Blvd. E, Ste 309, Charleston, WV 25301 www.elementalresources.net



34-09-9999-0920-7810-0000

56.87 acres, coal, Anglin's Creek

Nicholas/Wilderness

DISCLAIMER: To better represent our property for marketability purposes, Elemental Resources uses ArcGIS to compile information from multiple sources. However, these maps and other information are only as accurate as the source of such maps and other information. Furthermore some of the tax maps and shape files might be outdated and therefore may not reflect the most current information. Elemental Resources makes no warranty, representation, or guarantee of any kind regarding either any maps or other information provided herein or the sources of such maps or other information. Elemental Resources specifically disclaims all representations or warranties expressed or implied, including without limitation, the implied warranties of merchantability and fitness for a particular purpose. Elemental Resources assumes no liability either for any errors, omissions, or inaccuracies in the information provided, regardless of the cause of such or for any decision made, action not taken by the user in reliance upon any maps or information provided herein. Users of the information displayed in this map are strongly cautioned to verify all information before making any decision.