



01-01-9999-0107-6600-0000

15 acres, coal, Dogtown

Barbour/Barker

DISCLAIMER: To better represent our property for marketability purposes, Elemental Resources uses ArcGIS to compile information from multiple sources. However, these maps and other information are only as accurate as the source of such maps and other information. Furthermore some of the tax maps and shape files might be outdated and therefore may not reflect the most current information. Elemental Resources makes no warranty, representation, or guarantee of any kind regarding either any maps or other information provided herein or the sources of such maps or other information. Elemental Resources specifically disclaims all representations or warranties expressed or implied, including without limitation, the implied warranties of merchantability and fitness for a particular purpose. Elemental Resources assumes no liability either for any errors, omissions, or inaccuracies in the information provided, regardless of the cause of such or for any decision made, action not taken by the user in reliance upon any maps or information provided herein. Users of the information displayed in this map are strongly cautioned to verify all information before making any decision.

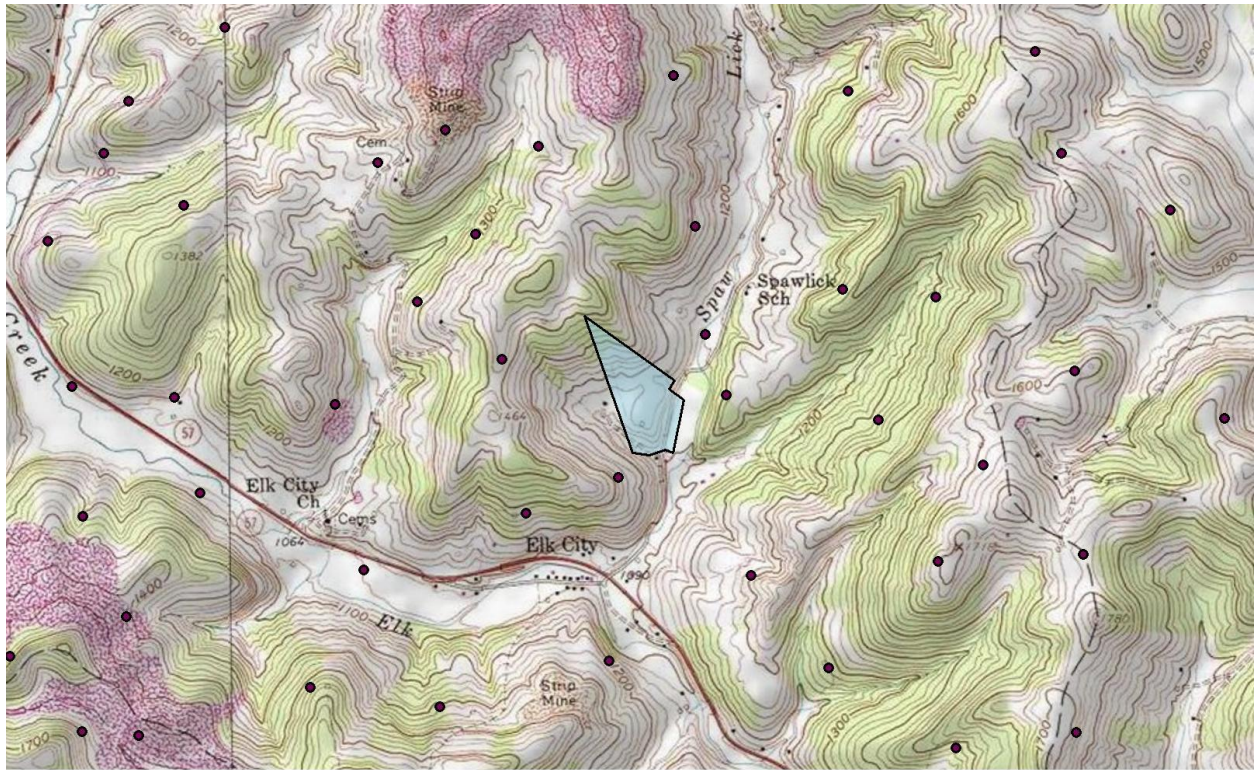


01-04-9999-0410-5100-0000

25 acres, minerals, Camp Run

Barbour/Elk

DISCLAIMER: To better represent our property for marketability purposes, Elemental Resources uses ArcGIS to compile information from multiple sources. However, these maps and other information are only as accurate as the source of such maps and other information. Furthermore some of the tax maps and shape files might be outdated and therefore may not reflect the most current information. Elemental Resources makes no warranty, representation, or guarantee of any kind regarding either any maps or other information provided herein or the sources of such maps or other information. Elemental Resources specifically disclaims all representations or warranties expressed or implied, including without limitation, the implied warranties of merchantability and fitness for a particular purpose. Elemental Resources assumes no liability either for any errors, omissions, or inaccuracies in the information provided, regardless of the cause of such or for any decision made, action not taken by the user in reliance upon any maps or information provided herein. Users of the information displayed in this map are strongly cautioned to verify all information before making any decision.



01-04-9999-0400-9200-0000

31 acres, coal, Spaw Lick

Barbour/Elk

DISCLAIMER: To better represent our property for marketability purposes, Elemental Resources uses ArcGIS to compile information from multiple sources. However, these maps and other information are only as accurate as the source of such maps and other information. Furthermore some of the tax maps and shape files might be outdated and therefore may not reflect the most current information. Elemental Resources makes no warranty, representation, or guarantee of any kind regarding either any maps or other information provided herein or the sources of such maps or other information. Elemental Resources specifically disclaims all representations or warranties expressed or implied, including without limitation, the implied warranties of merchantability and fitness for a particular purpose. Elemental Resources assumes no liability either for any errors, omissions, or inaccuracies in the information provided, regardless of the cause of such or for any decision made, action not taken by the user in reliance upon any maps or information provided herein. Users of the information displayed in this map are strongly cautioned to verify all information before making any decision.



01-04-9999-0401-3100-0000

10.1 acres, coal (PGH only), Brushy Fork

Barbour/Elk

DISCLAIMER: To better represent our property for marketing purposes, Elemental Resources uses AutoCAD to compile information from multiple sources. However, these maps and other information are only as accurate as the source of such maps and other information. Furthermore, some of the map tags and shape files might be outdated and therefore may not reflect the most current information. Elemental Resources makes no warranty, representation, or guarantee of any kind regarding either any maps or other information provided herein or the sources of such maps or other information. Elemental Resources specifically disclaims all representations or warranties expressed or implied, including without limitation, the implied warranties of merchantability and fitness for a particular purpose. Elemental Resources assumes no liability either for any errors, omissions, or inaccuracies in the information provided, regardless of the cause of such or for any decision made, action not taken by the user in reliance upon any maps or information provided herein. Users of the information displayed in this map are strongly cautioned to verify all information before making any decision.

ELEMENTAL RESOURCES LLC 304-342-2192 1018 Kanawha Blvd E, Ste 309, Charleston, WV 25301 www.elementalresources.com

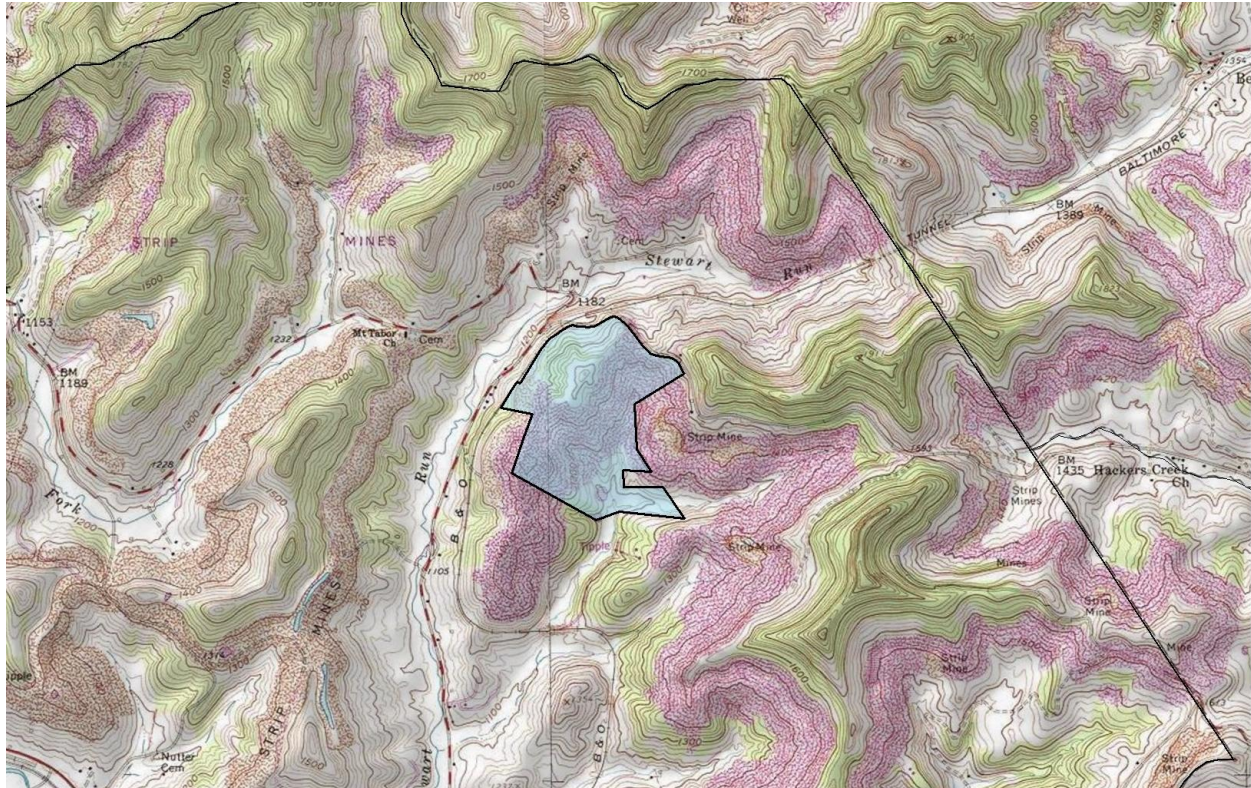


01-04-9999-0401-7100-0000

85.5 acres, coal, Elk Creek

Barbour/Elk

DISCLAIMER: To better represent our property for marketability purposes, Elemental Resources uses ArcGIS to compile information from multiple sources. However, these maps and other information are only as accurate as the source of such maps and other information. Furthermore some of the tax maps and shape files might be outdated and therefore may not reflect the most current information. Elemental Resources makes no warranty, representation, or guarantee of any kind regarding either any maps or other information provided herein or the sources of such maps or other information. Elemental Resources specifically disclaims all representations or warranties expressed or implied, including without limitation, the implied warranties of merchantability and fitness for a particular purpose. Elemental Resources assumes no liability either for any errors, omissions, or inaccuracies in the information provided, regardless of the cause of such or for any decision made, action not taken by the user in reliance upon any maps or information provided herein. Users of the information displayed in this map are strongly cautioned to verify all information before making any decision.



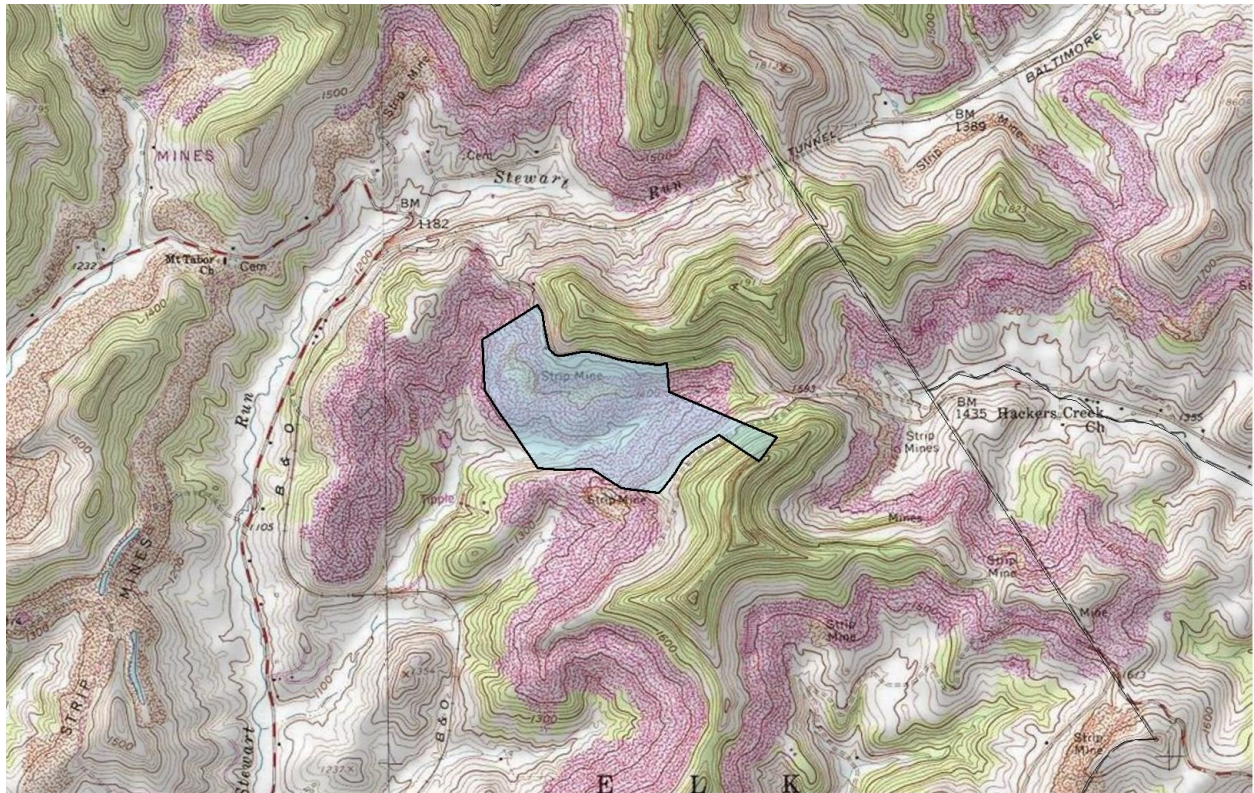
01-04-9999-0405-3100-0000

57.2 acres (118 shown), PGH & above, Stewart Run

Barbour/Elk

DISCLAIMER: To better represent our property for marketability purposes, Elemental Resources uses ArcGIS to compile information from multiple sources. However, these maps and other information are only as accurate as the source of such maps and other information. Furthermore some of the tax maps and shape files might be outdated and therefore may not reflect the most current information. Elemental Resources makes no warranty, representation, or guarantee of any kind regarding either any maps or other information provided herein or the sources of such maps or other information. Elemental Resources specifically disclaims all representations or warranties expressed or implied, including without limitation, the implied warranties of merchantability and fitness for a particular purpose. Elemental Resources assumes no liability either for any errors, omissions, or inaccuracies in the information provided, regardless of the cause of such, or for any decision made, action not taken by the user in reliance upon any maps or information provided herein. Users of the information displayed in this map are strongly cautioned to verify all information before making any decision.

ELEMENTAL RESOURCES LLC 304-342-2192 1018 Kanawha Blvd. E, Ste 309, Charleston, WV 25301 www.elementalresources.net



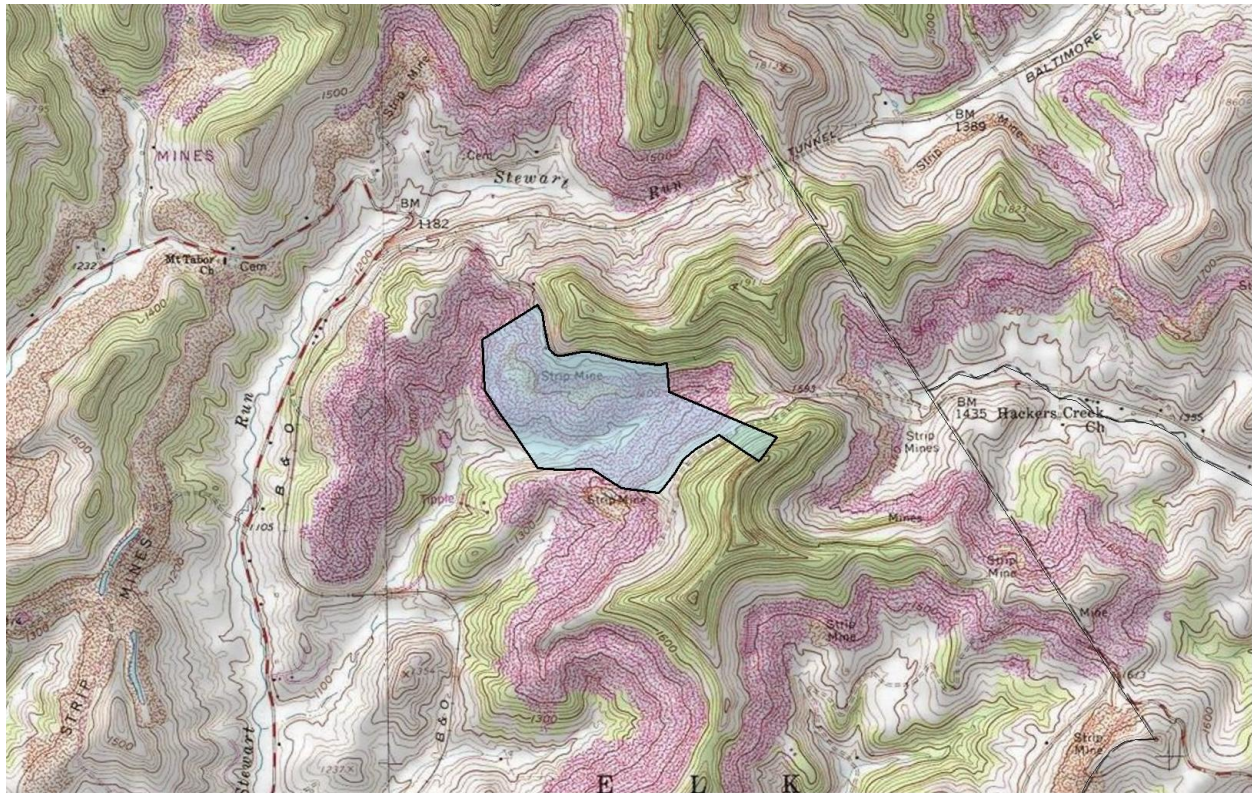
01-04-9999-0405-3300-0000

49.94 acres (150 shown), PGH & above, Stewarts Run

Upshur/Elk

DISCLAIMER: To better represent our property for marketability purposes, Elemental Resources uses ArcGIS to compile information from multiple sources. However, these maps and other information are only as accurate as the source of such maps and other information. Furthermore some of the tax maps and shape files might be outdated and therefore may not reflect the most current information. Elemental Resources makes no warranty, representation, or guarantee of any kind regarding either any maps or other information provided herein or the sources of such maps or other information. Elemental Resources specifically disclaims all representations or warranties expressed or implied, including without limitation, the implied warranties of merchantability and fitness for a particular purpose. Elemental Resources assumes no liability either for any errors, omissions, or inaccuracies in the information provided, regardless of the cause of such or for any decision made, action not taken by the user in reliance upon any maps or information provided herein. Users of the information displayed in this map are strongly cautioned to verify all information before making any decision.

ELEMENTAL RESOURCES LLC 304-342-2192 1018 Kanawha Blvd. E, Ste 309, Charleston, WV 25301 www.elementalresources.net



01-04-9999-0405-3300-0000

49.94 acres (150 shown), PGH & above, Stewarts Run

Upshur/Elk

DISCLAIMER: To better represent our property for marketing purposes, Elemental Resources uses AutoCAD to compile information from multiple sources. However, these maps and other information are only as accurate as the source of such maps and other information. Furthermore some of the tax maps and shape files might be outdated and therefore may not reflect the most current information. Elemental Resources makes no warranty, representation, or guarantee of any kind regarding either any maps or other information provided herein or the sources of such maps or other information. Elemental Resources specifically disclaims all representations or warranties expressed or implied, including without limitation, the implied warranties of merchantability and fitness for a particular purpose. Elemental Resources assumes no liability either for any errors, omissions, or inaccuracies in the information provided, regardless of the cause of such errors or for any decision made, action not taken by the user in reliance upon any maps or information provided herein. Users of the information displayed in this map are strongly cautioned to verify all information before making any decision.

ELEMENTAL RESOURCES LLC 304-342-2192 1018 Kanawha Blvd E, Ste 309, Charleston, WV 25301 www.elementalresources.com



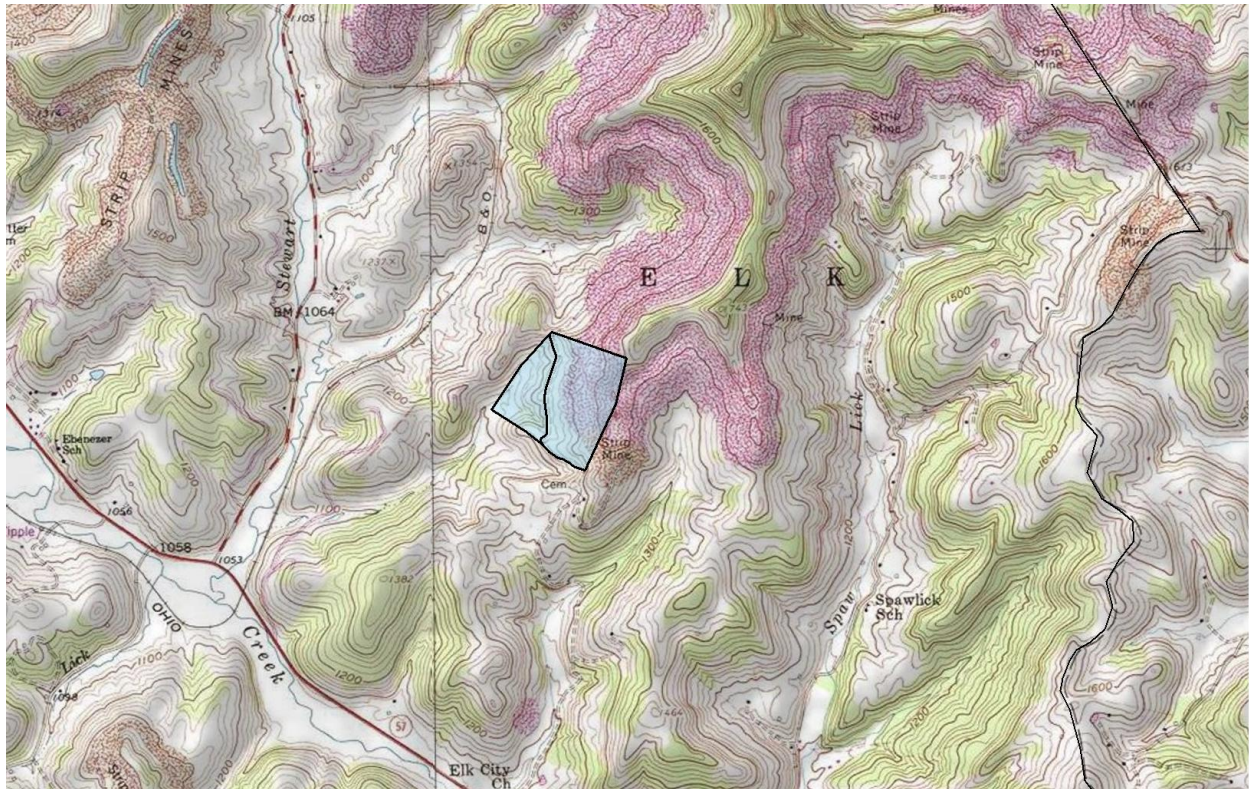
01-04-9999-0405-3900-0000

91.94 acres (258 shown), PGH & above, Stewart Run

Barbour/Elk

DISCLAIMER: To better represent our property for marketability purposes, Elemental Resources uses ArcGIS to compile information from multiple sources. However, these maps and other information are only as accurate as the source of such maps and other information. Furthermore some of the tax maps and shape files might be outdated and therefore may not reflect the most current information. Elemental Resources makes no warranty, representation, or guarantee of any kind regarding either any maps or other information provided herein or the sources of such maps or other information. Elemental Resources specifically disclaims all representations or warranties expressed or implied, including without limitation, the implied warranties of merchantability and fitness for a particular purpose. Elemental Resources assumes no liability either for any errors, omissions, or inaccuracies in the information provided, regardless of the cause of such or for any decision made, action not taken by the user in reliance upon any maps or information provided herein. Uses of the information displayed in this map are strongly cautioned to verify all information before making any decision.

ELEMENTAL RESOURCES LLC 304-340-2192 1018 Kanawha Blvd. E, Ste 309, Charleston, WV 25301 www.elementalresources.net



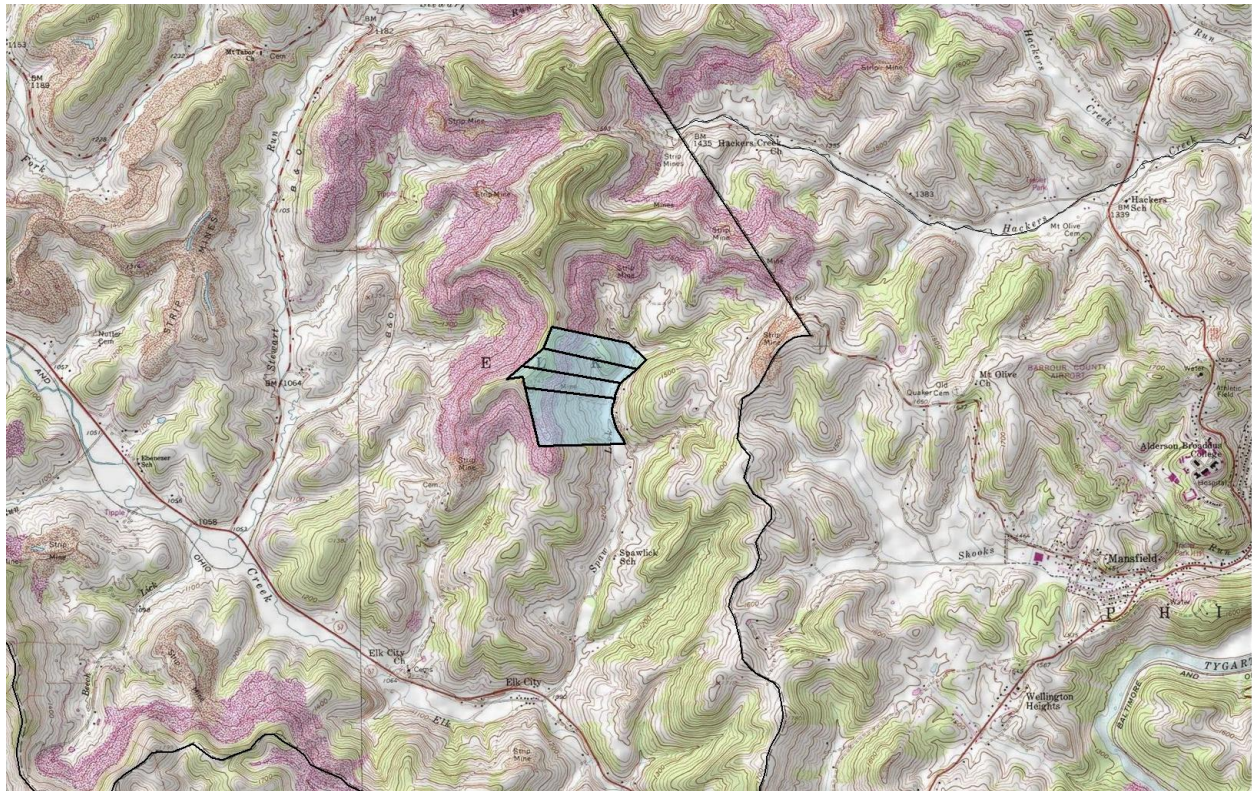
01-04-9999-0405-4000-0000

15.83 acres (60 shown), PGH & above, Stewart Run

Barbour/Elk

DISCLAIMER: To better represent our property for marketability purposes, Elemental Resources uses ArcGIS to compile information from multiple sources. However, these maps and other information are only as accurate as the source of such maps and other information. Furthermore some of the tax maps and shape files might be outdated and therefore may not reflect the most current information. Elemental Resources makes no warranty, representation, or guarantee of any kind regarding either any maps or other information provided herein or the sources of such maps or other information. Elemental Resources specifically disclaims all representations or warranties expressed or implied, including without limitation, the implied warranties of merchantability and fitness for a particular purpose. Elemental Resources assumes no liability either for any errors, omissions, or inaccuracies in the information provided, regardless of the cause of such or for any decision made, action not taken by the user in reliance upon any maps or information provided herein. Users of the information displayed in this map are strongly cautioned to verify all information before making any decision.

ELEMENTAL RESOURCES LLC 304-340-2192 1018 Kanawha Blvd. E, Ste 309, Charleston, WV 25301 www.elementalresources.net



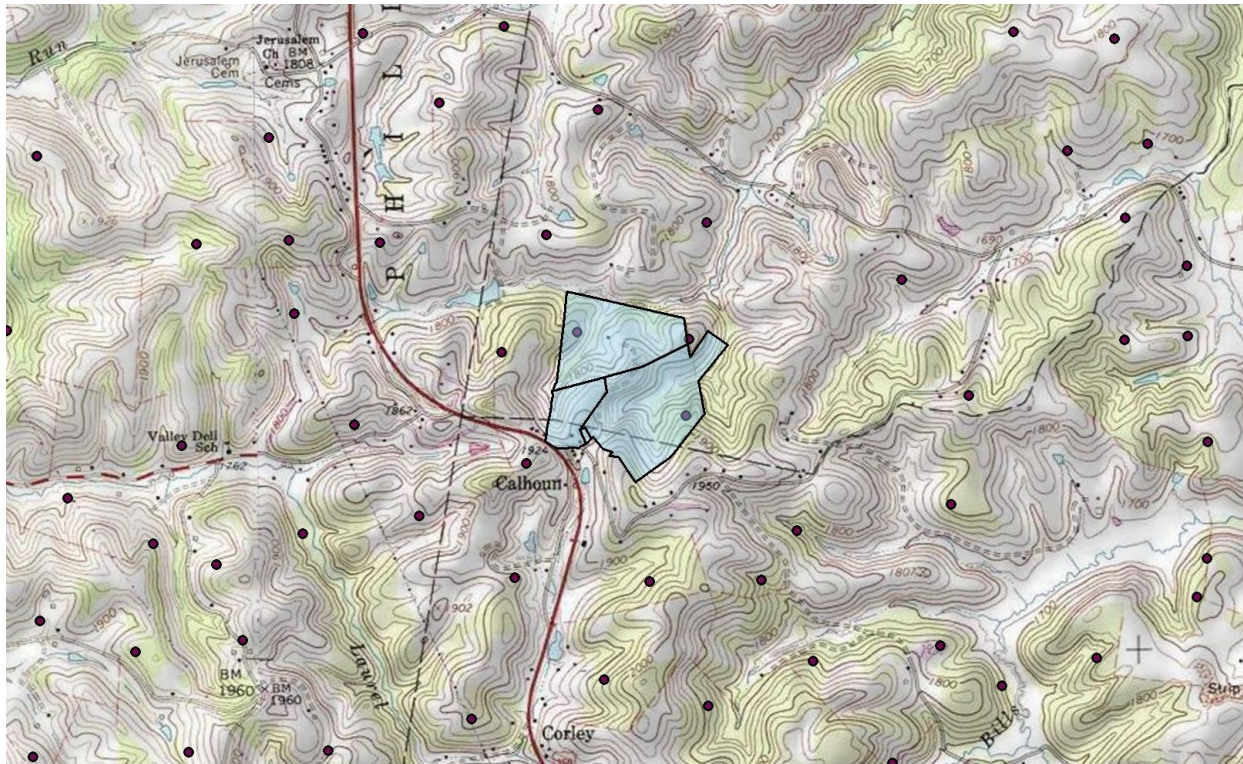
01-04-9999-0405-5200-0000

22.63 acres (138.7 shown), PGH & above, Spaw Lick

Barbour/Elk

DISCLAIMER: To better represent our property for metadata purposes, Elemental Resources uses ARCS to compile information from multiple sources. However, these maps and other information are only as accurate as the source of such maps and other information. Furthermore, some of the tax maps and shape files might be outdated and therefore may not reflect the most current information. Elemental Resources makes no warranty, representation, or guarantee of any kind regarding either any maps or other information provided herein or the sources of such maps or other information. Elemental Resources specifically disclaims all representations or warranties expressed or implied, including without limitation, the implied warranties of merchantability and fitness for a particular purpose. Elemental Resources assumes no liability either for any errors, omissions, or inaccuracies in the information provided, regardless of the cause of such or for any decision made, action not taken by the user in reliance upon any maps or information provided herein. Users of the information displayed in this map are strongly cautioned to verify all information before making any decision.

ELEMENTAL RESOURCES LLC 304-342-2912 1018 Kanawha Blvd E, Ste 309, Charleston, WV 25301 www.elementalresources.com

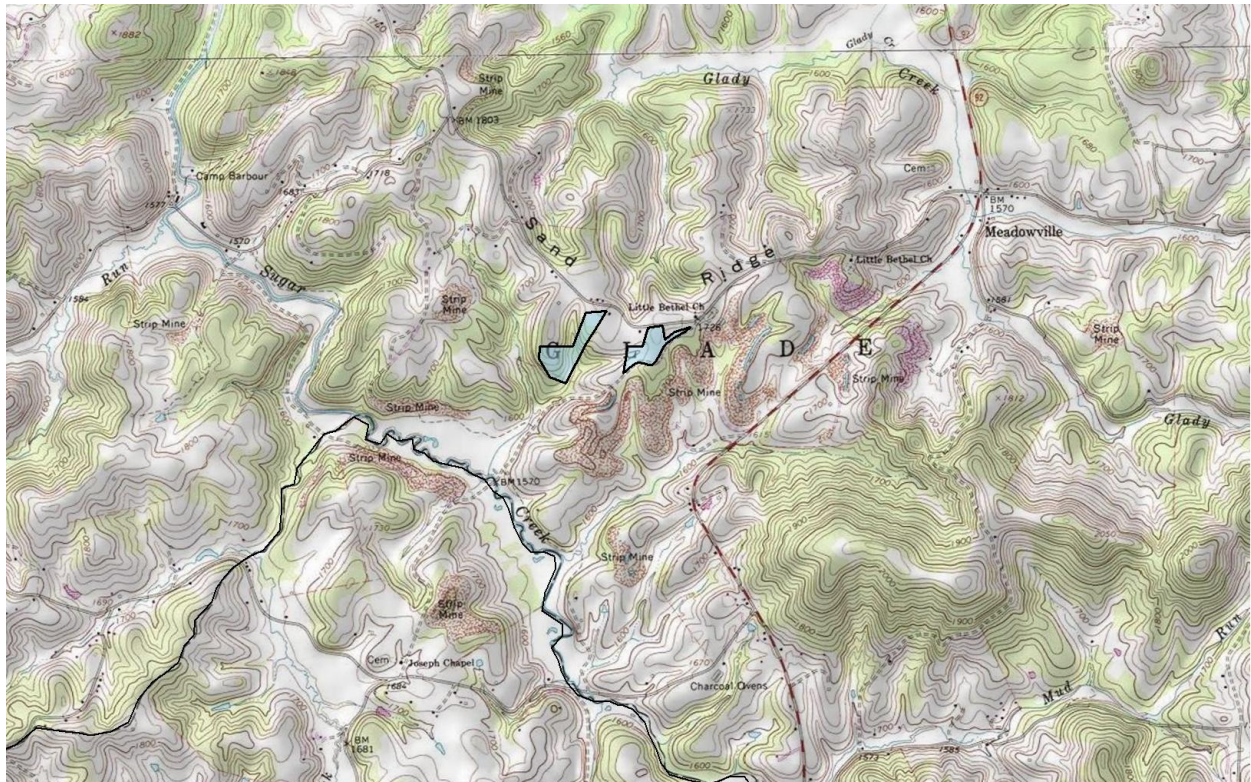


01-05-9999-0502-5330-0000

99 875 acres, oil & gas, Calhoun

Barbour/Glade

DISCLAIMER: To better represent our property for marketability purposes, Elemental Resources uses ArcGIS to compile information from multiple sources. However, these maps and other information are only as accurate as the source of such maps and other information. Furthermore some of the tax maps and shape files might be outdated and therefore may not reflect the most current information. Elemental Resources makes no warranty, representation, or guarantee of any kind regarding either any maps or other information provided herein or the sources of such maps or other information. Elemental Resources specifically disclaims all representations or warranties expressed or implied, including without limitation, the implied warranties of merchantability and fitness for a particular purpose. Elemental Resources assumes no liability either for any errors, omissions, or inaccuracies in the information provided regardless of the cause of such or for any decision made, action not taken by the user in reliance upon any maps or information provided herein. Users of the information displayed in this map are strongly cautioned to verify all information before making any decision.



01-05-9999-0507-8100-0000

10 or 52.9 acres, coal (BRC only), Glady Creek

Barbour/Glade

DISCLAIMER: To better represent our property for marketability purposes, Elemental Resources uses ArcGIS to compile information from multiple sources. However, these maps and other information are only as accurate as the source of such maps and other information. Furthermore, some of the tax maps and shape files might be outdated and therefore may not reflect the most current information. Elemental Resources makes no warranty, representation, or guarantee of any kind regarding either any maps or other information provided herein or the sources of such maps or other information. Elemental Resources specifically disclaims all representations or warranties expressed or implied, including without limitation, the implied warranties of merchantability and fitness for a particular purpose. Elemental Resources assumes no liability either for any errors, omissions, or inaccuracies in the information provided, regardless of the cause of such or for any decision made, action not taken by the user in reliance upon any maps or information provided herein. Users of the information displayed in this map are strongly cautioned to verify all information before making any decision.

ELEMENTAL RESOURCES LLC 304-342-2192 1018 Kanawha Blvd. E, Ste 309, Charleston, WV 25301 www.elementalresources.net

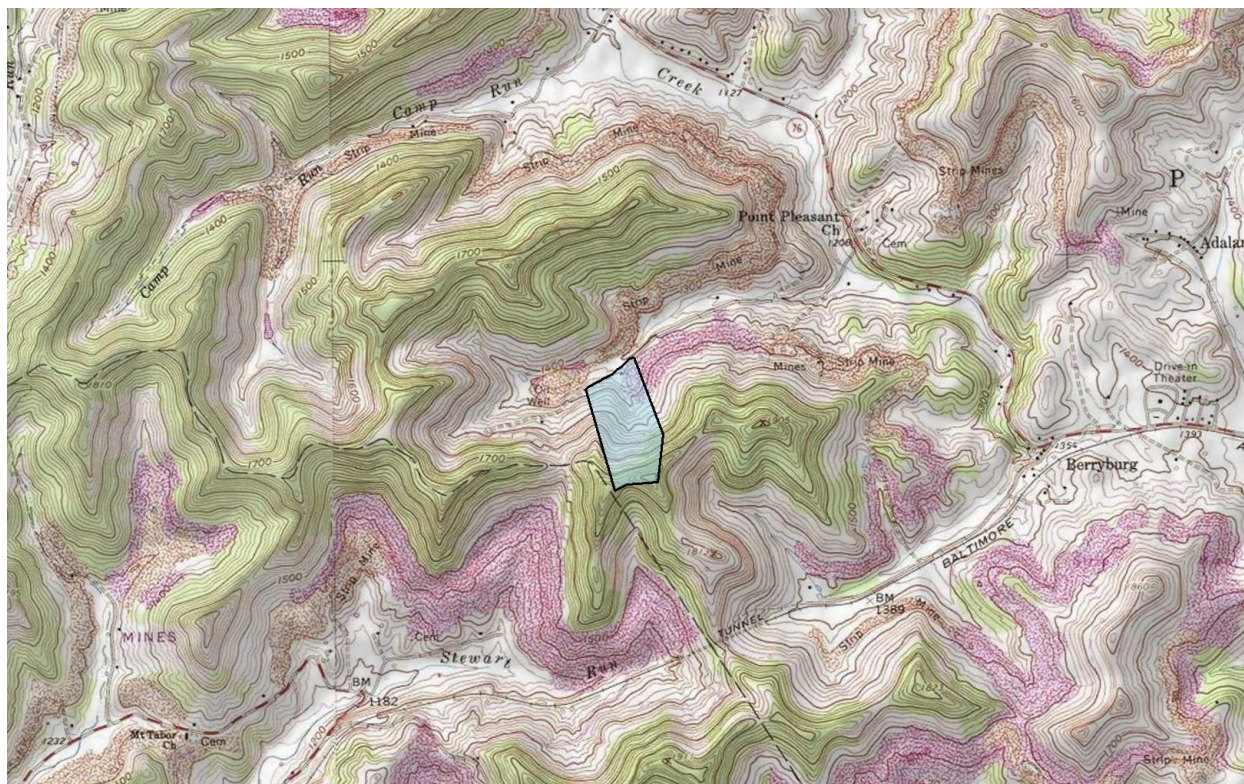


01-07-9999-0709-8210-0000

576 acres, coal, Tygart Valley River

Barbour/Philippi

DISCLAIMER: To better represent our property for marketability purposes, Elemental Resources uses ArcGIS to compile information from multiple sources. However, these maps and other information are only as accurate as the source of such maps and other information. Furthermore some of the tax maps and shape files might be outdated and therefore may not reflect the most current information. Elemental Resources makes no warranty, representation, or guarantee of any kind regarding either any maps or other information provided herein or the sources of such maps or other information. Elemental Resources specifically disclaims all representations or warranties expressed or implied, including without limitation, the implied warranties of merchantability and fitness for a particular purpose. Elemental Resources assumes no liability either for any errors, omissions, or inaccuracies in the information provided, regardless of the cause of such or for any decision made, action not taken by the user in reliance upon any maps or information provided herein. Users of the information displayed in this map are strongly cautioned to verify all information before making any decision.



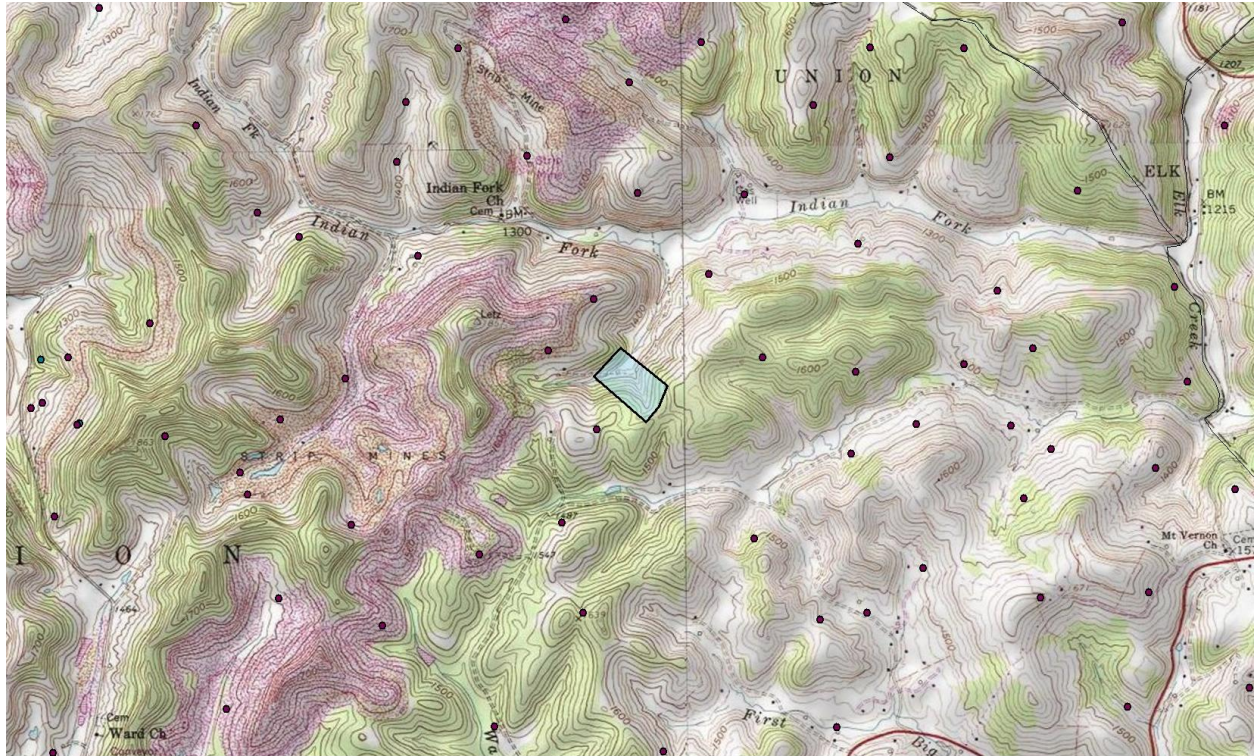
01-09-9999-0906-2890-0000

33.1 acres, coal (PGH & above), Berryburg

Barbour/Pleasant

DISCLAIMER: To better represent our property for made's purpose maps, Elemental Resources uses ArcGIS to compile information from multiple sources. However, these maps and other information are only as accurate as the source of such maps and other information. Furthermore some of the map's shapes and shapes files might be outdated and therefore may not reflect the most current information. Elemental Resources makes no warranty, representation, or guarantee of any kind regarding either any maps or other information provided herein or the sources of such maps or other information. Elemental Resources specifically disclaims all representations or warranties expressed or implied, including without limitation, that the information is accurate, complete, current, reliable, or suitable for any particular purpose. Users of the information displayed in this map are strongly cautioned to verify all information before making any decision. For any decision made, action not taken by the user in reliance upon any maps or information provided herein. Users of the information displayed in this map are strongly cautioned to verify all information before making any decision.

ELEMENTAL RESOURCES LLC 304-342-2192 1018 Kanawha Blvd. E, Ste 309, Charleston, WV 25301 www.elementalresources.net

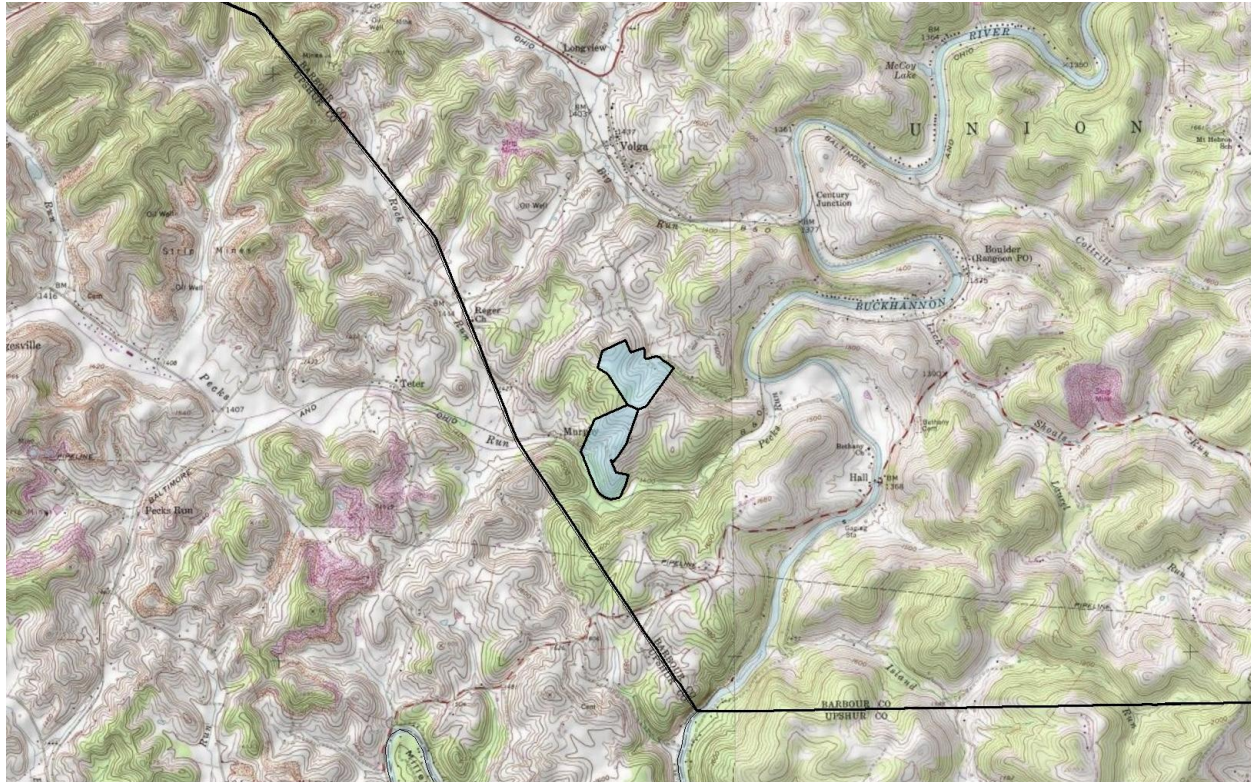


01-10-9999-0008-3810-0000

20 acres, coal, Indian Fork

Barbour/Union

DISCLAIMER: To better represent our property for marketability purposes, Elemental Resources uses ArcGIS to compile information from multiple sources. However, these maps and other information are only as accurate as the source of such maps and other information. Furthermore some of the tax maps and shape files might be outdated and therefore may not reflect the most current information. Elemental Resources makes no warranty, representation, or guarantee of any kind regarding either any maps or other information provided herein or the sources of such maps or other information. Elemental Resources specifically disclaims all representations or warranties expressed or implied, including without limitation, the implied warranties of merchantability and fitness for a particular purpose. Elemental Resources assumes no liability either for any errors, omissions, or inaccuracies in the information provided, regardless of the causes of such or for any decision made, action not taken by the user in reliance upon any maps or information provided herein. Users of the information displayed in this map are strongly cautioned to verify all information before making any decision.



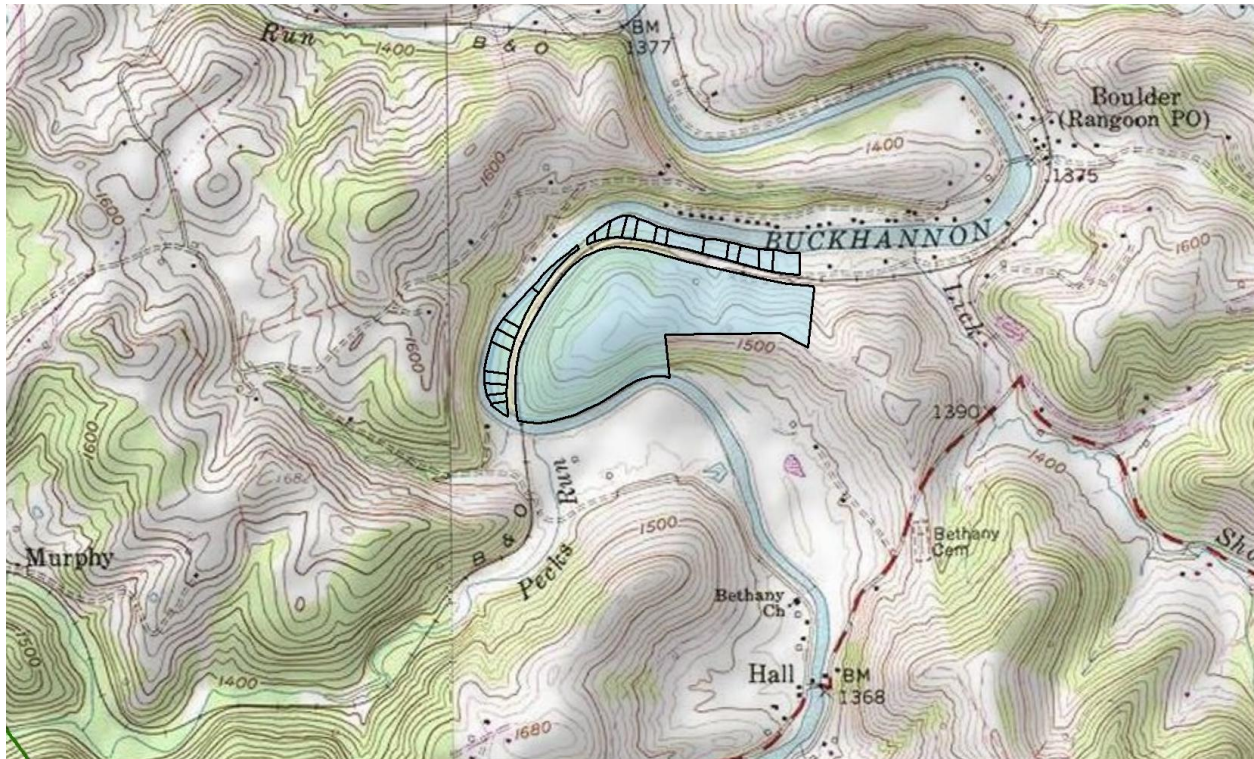
01-10-9999-0010-1500-0000

30 acres, coal, Buckhannon River

Barbour/Union

DISCLAIMER: To better represent our property for marketability purposes, Elemental Resources uses ArcGIS to compile information from multiple sources. However, these maps and other information are only as accurate as the source of such maps and other information. Furthermore, some of the tie maps and shape files might be outdated and therefore may not reflect the most current information. Elemental Resources makes no warranty, representation, or guarantee of any kind regarding either any maps or other information provided herein or the sources of such maps or other information. Elemental Resources specifically disclaims all representations or warranties expressed or implied, including without limitation, the implied warranties of merchantability and fitness for a particular purpose. Elemental Resources assumes no liability either for any errors, omissions, or inaccuracies in the information provided, regardless of the cause of such or for any decision made, action not taken by the user in reliance upon any maps or information provided herein. Users of the information displayed in this map are strongly cautioned to verify all information before making any decision.

ELEMENTAL RESOURCES LLC 304-342-2192 1018 Kanawha Blvd. E, Ste 309, Charleston, WV 25301 www.elementalresources.net



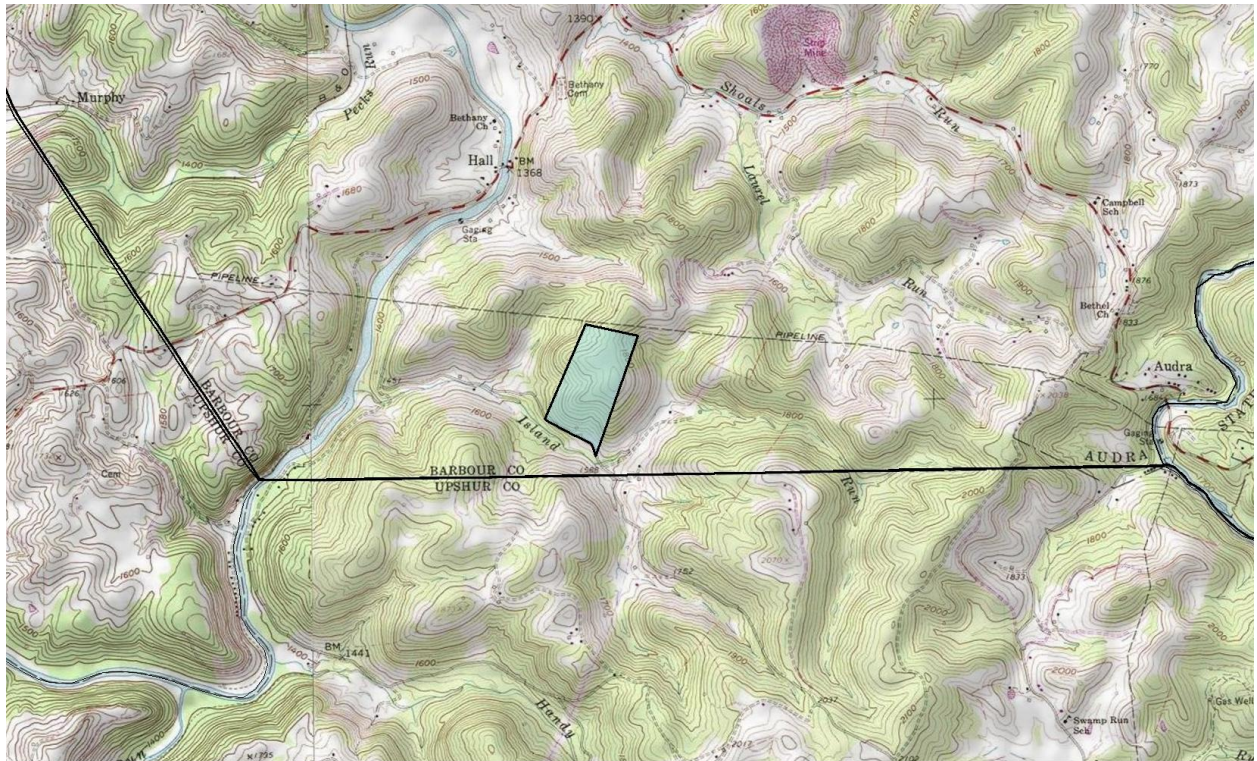
01-10-9999-0011-5400-0000

80 acres, coal, Buckhannon River

Barbour/Union

DISCLAIMER: To better represent our property for marketability purposes, Elemental Resources uses ArcGIS to compile information from multiple sources. However, these maps and other information are only as accurate as the source of such maps and other information. Furthermore some of the tax maps and shape files might be outdated and therefore may not reflect the most current information. Elemental Resources makes no warranty, representation, or guarantee of any kind regarding either any maps or other information provided herein or the sources of such maps or other information. Elemental Resources specifically disclaims all representations or warranties expressed or implied, including without limitation, the implied warranties of merchantability and fitness for a particular purpose. Elemental Resources assumes no liability either for any errors, omissions, or inaccuracies in the information provided, regardless of the cause of such or for any decision made, action not taken by the user in reliance upon any maps or information provided herein. Users of the information displayed in this map are strongly cautioned to verify all information before making any decision.

ELEMENTAL RESOURCES LLC 304-342-2192 1018 Kanawha Blvd E, Ste 302, Charleston, WV 25301 www.elementalresources.net

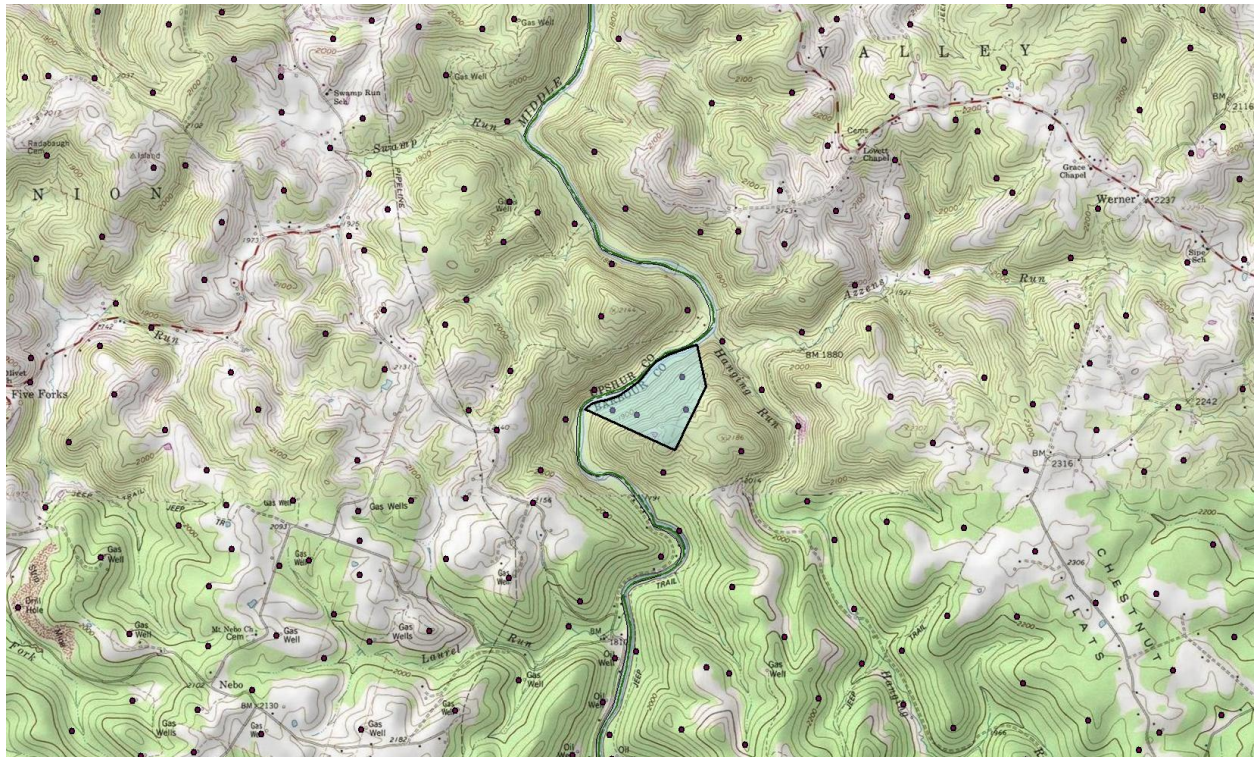


01-10-9999-0011-6200-0000

53 acres, coal, Buckhannon River

Barbour/Union

DISCLAIMER: To better represent our property for marketability purposes, Elemental Resources uses ArcGIS to compile information from multiple sources. However, these maps and other information are only as accurate as the source of such maps and other information. Furthermore some of the tax maps and shape files might be outdated and therefore may not reflect the most current information. Elemental Resources makes no warranty, representation, or guarantee of any kind regarding either any maps or other information provided herein or the sources of such maps or other information. Elemental Resources specifically disclaims all representations or warranties expressed or implied, including without limitation, the implied warranties of merchantability and fitness for a particular purpose. Elemental Resources assumes no liability either for any errors, omissions, or inaccuracies in the information provided, regardless of the cause of such or for any decision made, action not taken by the user in reliance upon any maps or information provided herein. Users of the information displayed in this map are strongly cautioned to verify all information before making any decision.



01-11-9999-0108-0700-0000

60 acres, coal, Hanging Run

Barbour/Valley

DISCLAIMER: To better represent our property for marketability purposes, Elemental Resources uses ArcGIS to compile information from multiple sources. However, these maps and other information are only as accurate as the source of such maps and other information. Furthermore some of the tax maps and shape files might be outdated and therefore may not reflect the most current information. Elemental Resources makes no warranty, representation, or guarantee of any kind regarding either any maps or other information provided herein or the sources of such maps or other information. Elemental Resources specifically disclaims all representations or warranties expressed or implied, including without limitation, the implied warranties of merchantability and fitness for a particular purpose. Elemental Resources assumes no liability either for any errors, omissions, or inaccuracies in the information provided, regardless of the cause of such, or for any decision made, action not taken by the user in reliance upon any maps or information provided herein. Users of the information displayed in this map are strongly cautioned to verify all information before making any decision.



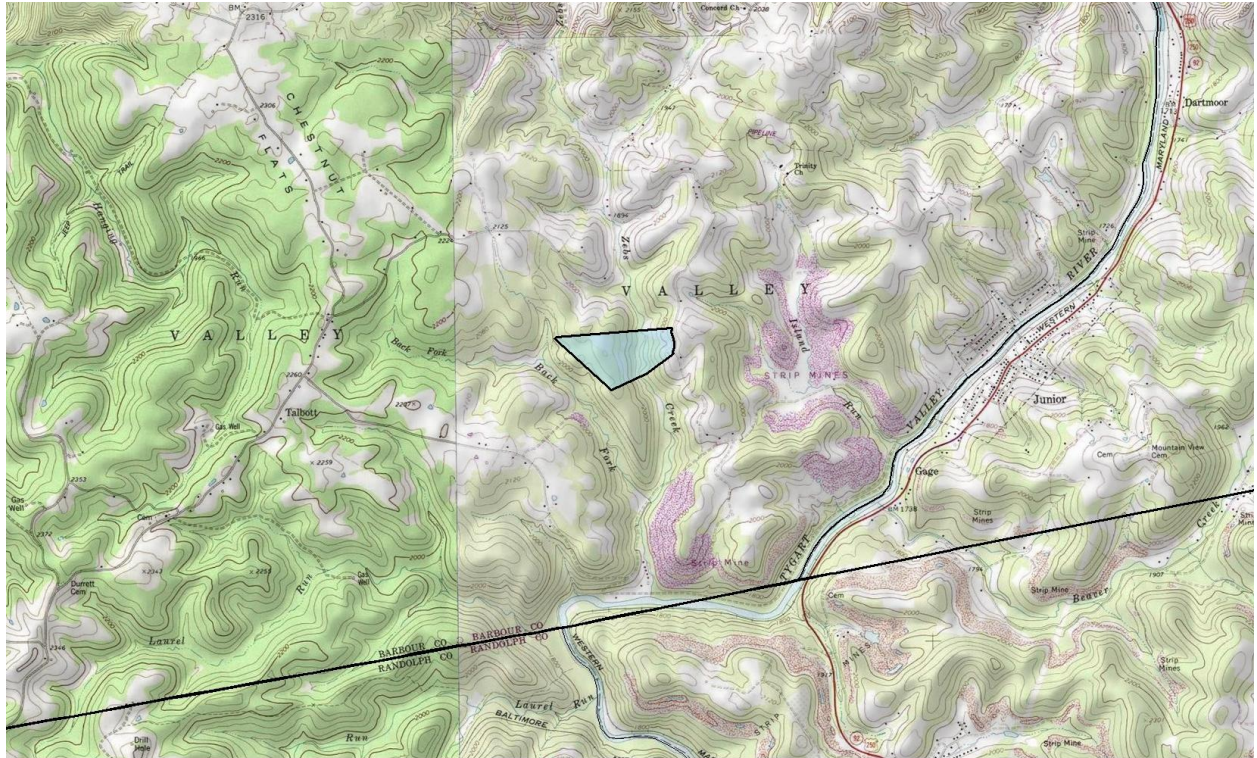
01-11-9999-0108-2440-0000

86.805 acres, coal ("less strip/augur"), Talbott

Barbour/Valley

DISCLAIMER: To better represent our property for marketability purposes, Elemental Resources uses ArcGIS to compile information from multiple sources. However, these maps and other information are only as accurate as the source of such maps and other information. Furthermore, some of the tax maps and shape files might be outdated and therefore may not reflect the most current information. Elemental Resources makes no warranty, representation, or guarantee of any kind regarding either any maps or other information provided herein or the sources of such maps or other information. Elemental Resources specifically disclaims all representations or warranties expressed or implied, including without limitation, the implied warranties of merchantability and fitness for a particular purpose. Elemental Resources assumes no liability either for any errors, omissions, or inaccuracies in the information provided, regardless of the cause of such or for any decision made, action not taken by the user in reliance upon any maps or information provided herein. Users of the information displayed in this map are strongly cautioned to verify all information before making any decision.

ELEMENTAL RESOURCES LLC 304-342-2192 1018 Kanawha Blvd. E, Ste 302, Charleston, WV 25301 www.elementalresources.net



01-11-9999-0108-7530-0000

60 acres, coal, Zebs Creek

Barbour/Valley

DISCLAIMER: To better represent our property for marketability purposes, Elemental Resources uses ArcGIS to compile information from multiple sources. However, these maps and other information are only as accurate as the source of such maps and other information. Furthermore some of the tax maps and shape files might be outdated and therefore may not reflect the most current information. Elemental Resources makes no warranty, representation, or guarantee of any kind regarding either any maps or other information provided herein or the sources of such maps or other information. Elemental Resources specifically disclaims all representations or warranties expressed or implied, including without limitation, the implied warranties of merchantability and fitness for a particular purpose. Elemental Resources assumes no liability either for any errors, omissions, or inaccuracies in the information provided, regardless of the cause of such or for any decision made, action not taken by the user in reliance upon any maps or information provided herein. Users of the information displayed in this map are strongly cautioned to verify all information before making any decision.