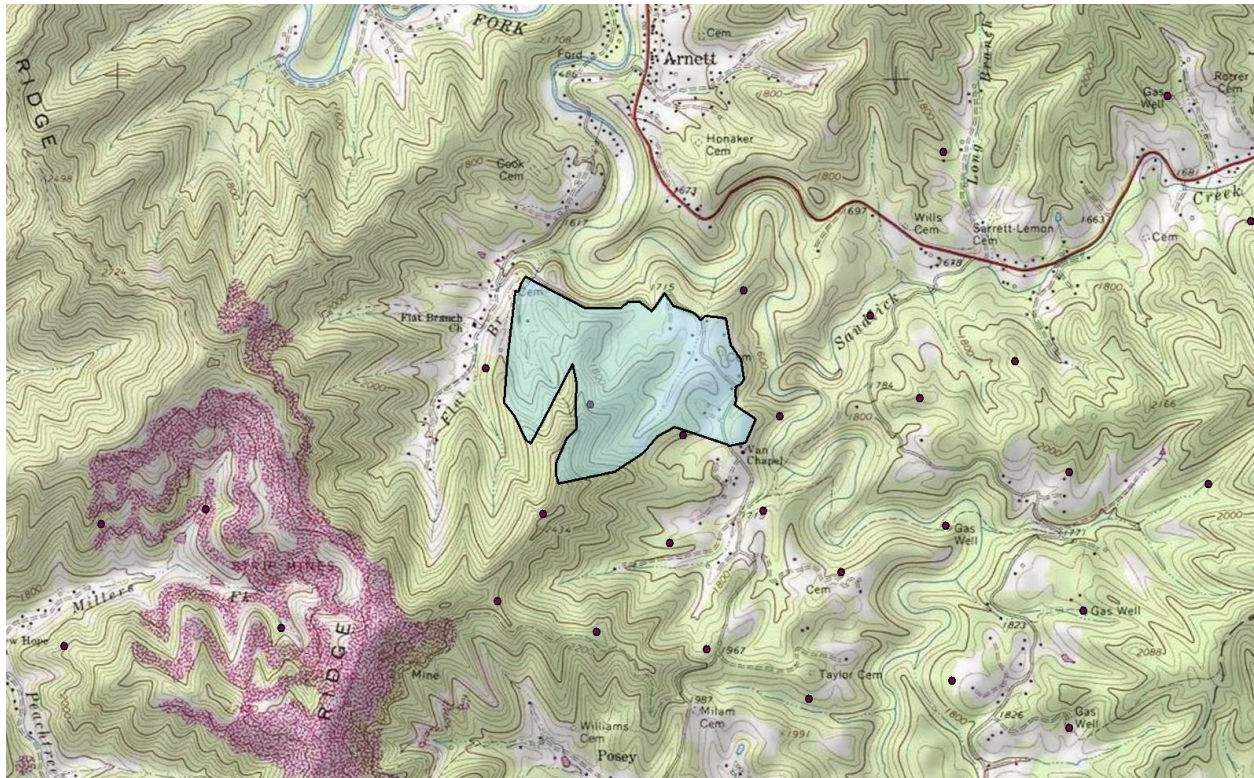


DISCLAIMER: To better represent our property for marketability purposes, Elemental Resources uses ArcGIS to compile information from multiple sources. However, these maps and other information are only as accurate as the sources of such maps and other information. Furthermore, some of the tax maps and shape files might be outdated and therefore may not reflect the most current information. Elemental Resources makes no warranty, representation, or guarantee of any kind regarding either any maps or other information provided herein or the sources of such maps or other information. Elemental Resources specifically disclaims all representations or warranties expressed or implied, including without limitation, the implied warranties of merchantability and fitness for a particular purpose. Elemental Resources assumes no liability either for any errors, omissions, or inaccuracies in the information provided, regardless of the cause of such or for any decision made, action not taken by the user in reliance upon any maps or information provided herein. Users of the information displayed in this map are strongly cautioned to verify all information before making any decision.

ELEMENTAL RESOURCES LLC 304-342-2192 1018 Kanawha Blvd. E, Ste 309, Charleston, WV 25301 www.elementalresources.net



DISCLAIMER: To better represent our property for marketability purposes, Elemental Resources uses ArcGIS to compile information from multiple sources. However, these maps and other information are only as accurate as the source of such maps and other information. Furthermore, some of the map tags and shape files might be outdated and therefore may not reflect the most current information. Elemental Resources makes no warranty, representation, or guarantee of any kind regarding either any maps or other information provided herein or the sources of such maps or other information. Elemental Resources specifically disclaims all representations or warranties expressed or implied, including without limitation, the implied warranties of merchantability and fitness for a particular purpose. Elemental Resources assumes no liability either for any errors, omissions, or inaccuracies in the information provided, regardless of the causes of such or for any decision made, action not taken by the user in reliance upon any maps or information provided herein. Users of the information displayed in this map are strongly cautioned to verify all information before making any decision.

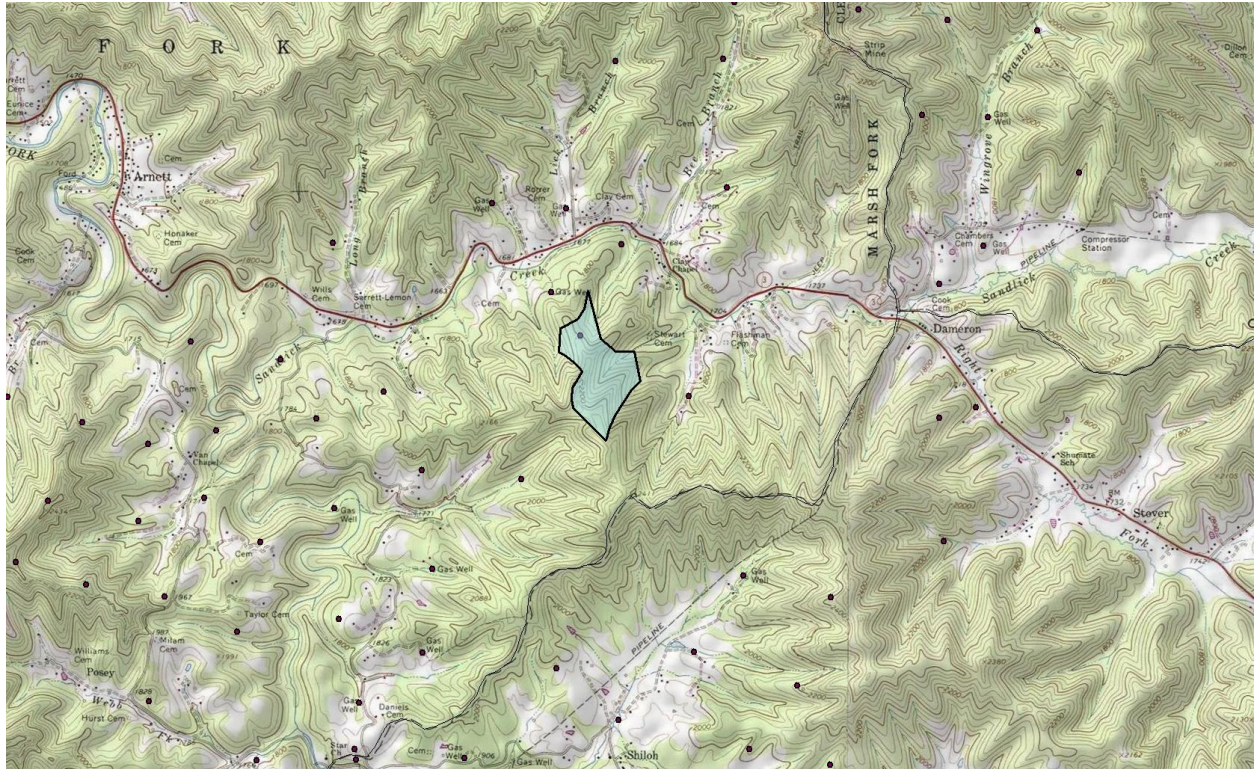


41-05-9999-0637-6049-0000

165.055 acres, coal, Marsh Fk

Raleigh/Marsh Fork

DISCLAIMER: To better represent our property for marketability purposes, Elemental Resources uses ArcGIS to compile information from multiple sources. However, these maps and other information are only as accurate as the source of such maps and other information. Furthermore some of the tax maps and shape files might be outdated and therefore may not reflect the most current information. Elemental Resources makes no warranty, representation, or guarantee of any kind regarding either any maps or other information provided herein or the sources of such maps or other information. Elemental Resources specifically disclaims all representations or warranties expressed or implied, including without limitation, the implied warranties of merchantability and fitness for a particular purpose. Elemental Resources assumes no liability either for any errors, omissions, or inaccuracies in the information provided, regardless of the cause of such or for any decision made, action not taken by the user in reliance upon any maps or information provided herein. Users of the information displayed in this map are strongly cautioned to verify all information before making any decision.

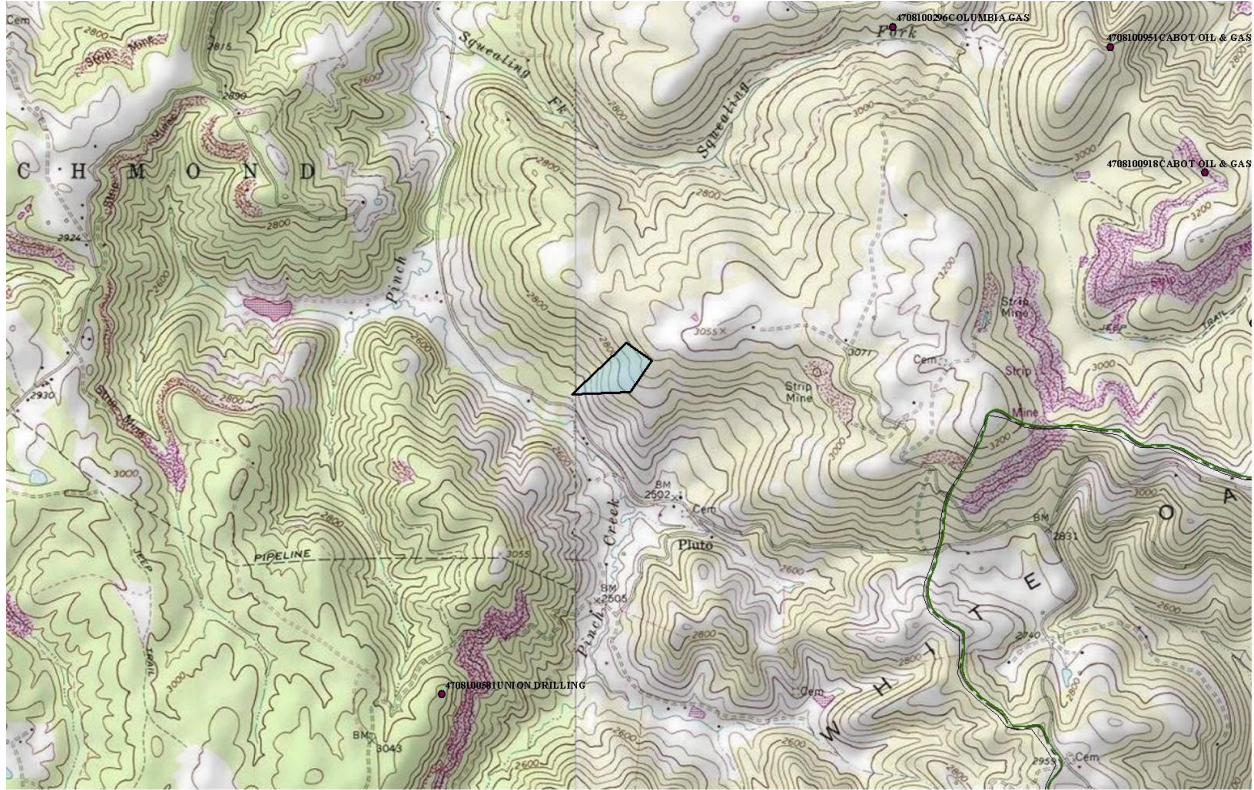


41-05-9999-0639-0309-0000

71.23 ac, coal, Sand Lick

Raleigh/Marsh Fork

DISCLAIMER: To better represent our property for marketability purposes, Elemental Resources uses ArcGIS to compile information from multiple sources. However, these maps and other information are only as accurate as the source of such maps and other information. Furthermore some of the tax maps and shape files might be outdated and therefore may not reflect the most current information. Elemental Resources makes no warranty, representation, or guarantee of any kind regarding either any maps or other information provided herein or the sources of such maps or other information. Elemental Resources specifically disclaims all representations or warranties expressed or implied, including without limitation, the implied warranties of merchantability and fitness for a particular purpose. Elemental Resources assumes no liability either for any errors, omissions, or inaccuracies in the information provided, regardless of the cause of such or for any decision made, action not taken by the user in reliance upon any maps or information provided herein. Users of the information displayed in this map are strongly cautioned to verify all information before making any decision.



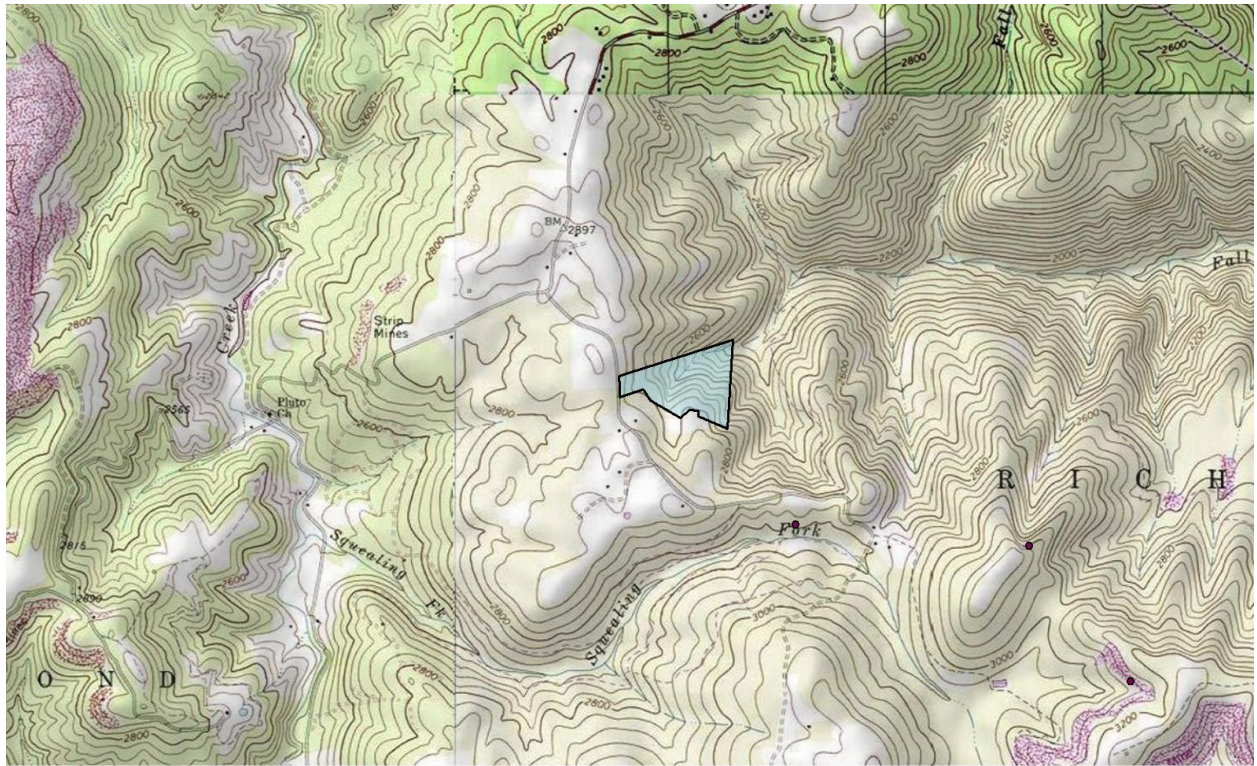
41-07-9999-0861-1762-0000

16 acres, minerals, Pinch Creek

Raleigh/Richmond

DISCLAIMER: To better represent our property for marketability purposes, Elemental Resources uses ArcGIS to compile information from multiple sources. However, these maps and other information are only as accurate as the source of such maps and other information. Furthermore some of the tax maps and shape files might be outdated and therefore may not reflect the most current information. Elemental Resources makes no warranty, representation, or guarantee of any kind regarding either any maps or other information provided herein or the sources of such maps or other information. Elemental Resources specifically disclaims all representations or warranties expressed or implied, including without limitation, the implied warranties of merchantability and fitness for a particular purpose. Elemental Resources assumes no liability either for any errors, omissions, or inaccuracies in the information provided, regardless of the cause of such or for any decision made, action not taken by the user in reliance upon any maps or information provided herein. Users of the information displayed in this map are strongly cautioned to verify all information before making any decision.

ELEMENTAL RESOURCES LLC 304-342-2192 1018 Kanawha Blvd. E, Ste 309, Charleston, WV 25301 www.elementalresources.net

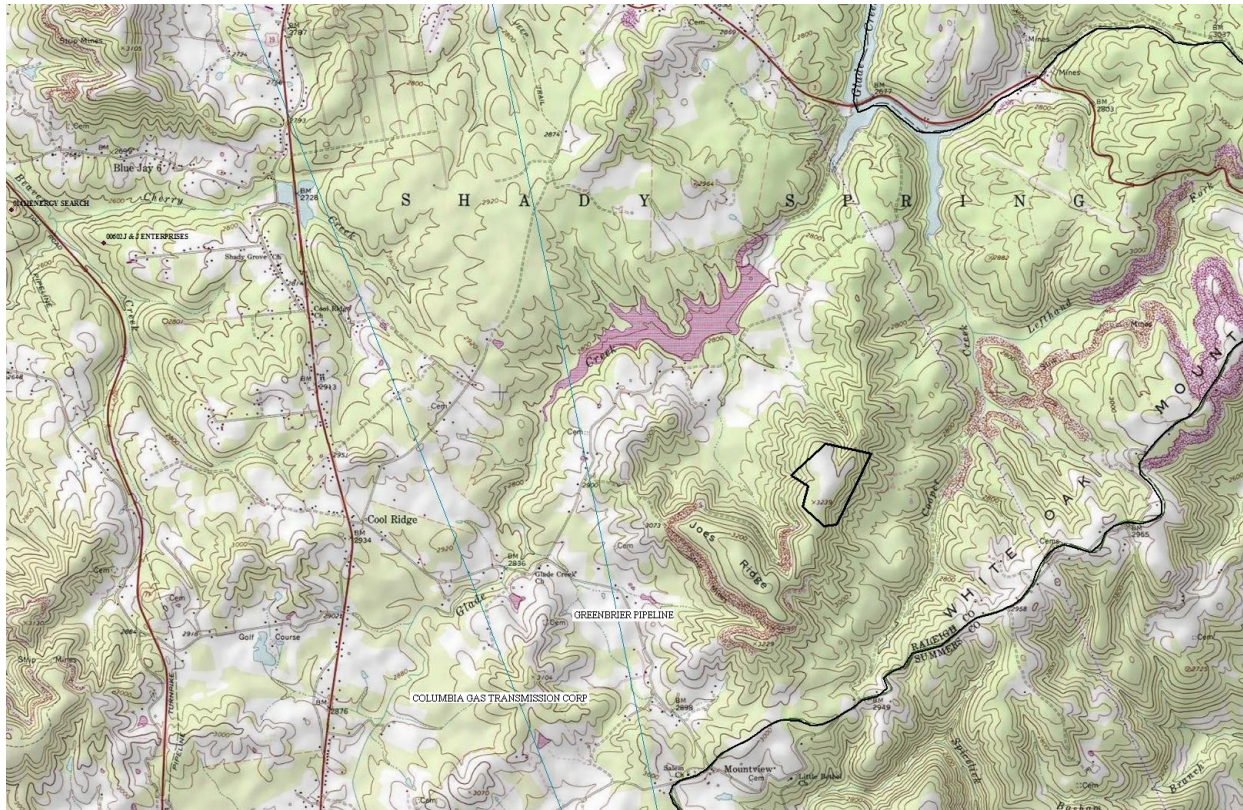


41-07-9999-0634-3842-0000

26 acres, minerals, Fall Branch

Raleigh/Richmond

DISCLAIMER: To better represent our property for marketability purposes, Elemental Resources uses ArcGIS to compile information from multiple sources. However, these maps and other information are only as accurate as the source of such maps and other information. Furthermore some of the tax maps and shape files might be outdated and therefore may not reflect the most current information. Elemental Resources makes no warranty, representation, or guarantee of any kind regarding either any maps or other information provided herein or the sources of such maps or other information. Elemental Resources specifically disclaims all representations or warranties expressed or implied, including without limitation, the implied warranties of merchantability and fitness for a particular purpose. Elemental Resources assumes no liability either for any errors, omissions, or inaccuracies in the information provided, regardless of the cause of such, or for any decision made, action not taken by the user in reliance upon any maps or information provided herein. Users of the information displayed in this map are strongly cautioned to verify all information before making any decision.



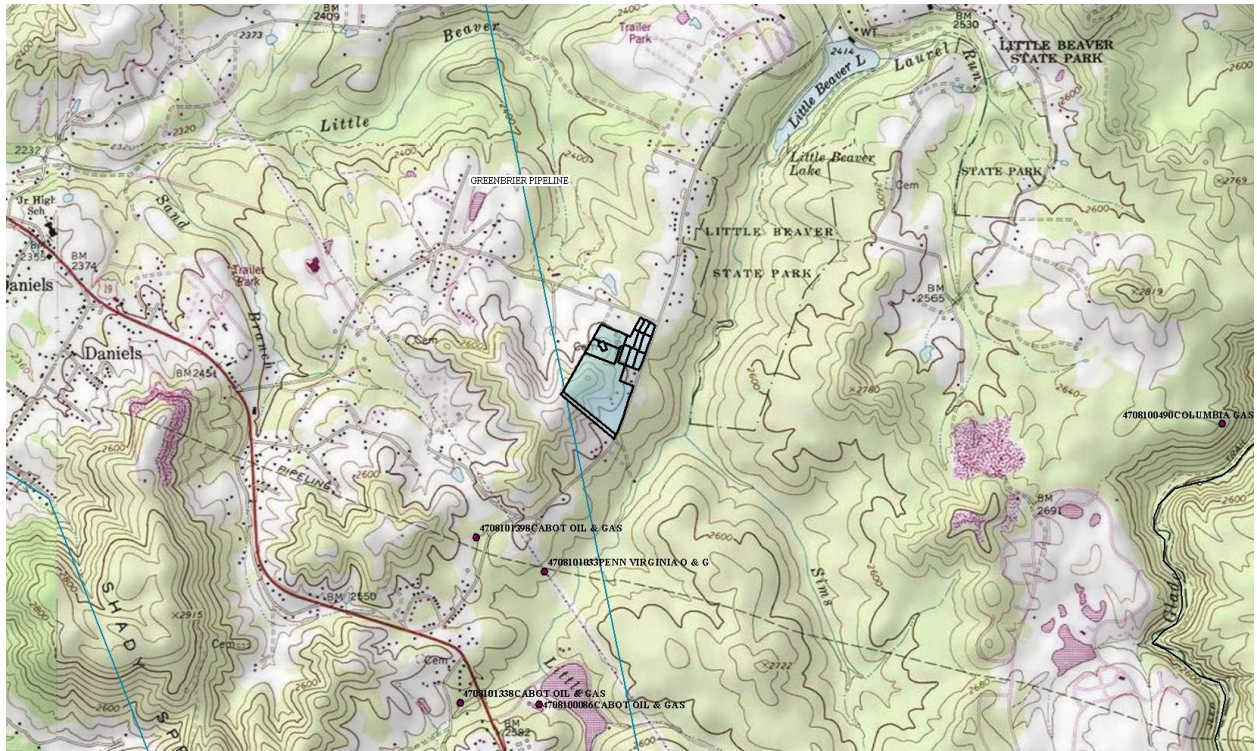
41-08-9999-0631-9343-0000

50 acres, minerals, Joes Ridge

Raleigh/Shady Spring

DISCLAIMER: To better represent our property for marketability purposes, Elemental Resources uses ArcGIS to compile information from multiple sources. However, these maps and other information are only as accurate as the source of such maps and other information. Furthermore some of the tax maps and shape files might be outdated and therefore may not reflect the most current information. Elemental Resources makes no warranty, representation, or guarantee of any kind regarding either any maps or other information provided herein or the sources of such maps or other information. Elemental Resources specifically disclaims all representations or warranties expressed or implied, including without limitation, the implied warranties of merchantability and fitness for a particular purpose. Elemental Resources assumes no liability either for any errors, omissions, or inaccuracies in the information provided, regardless of the cause of such, or for any decision made, action not taken by the user in reliance upon any maps or information provided herein. Users of the information displayed in this map are strongly cautioned to verify all information before making any decision.

ELEMENTAL RESOURCES LLC 304-342-2192 1018 Kanawha Blvd. E, Ste 309, Charleston, WV 25301 www.elementalresources.net

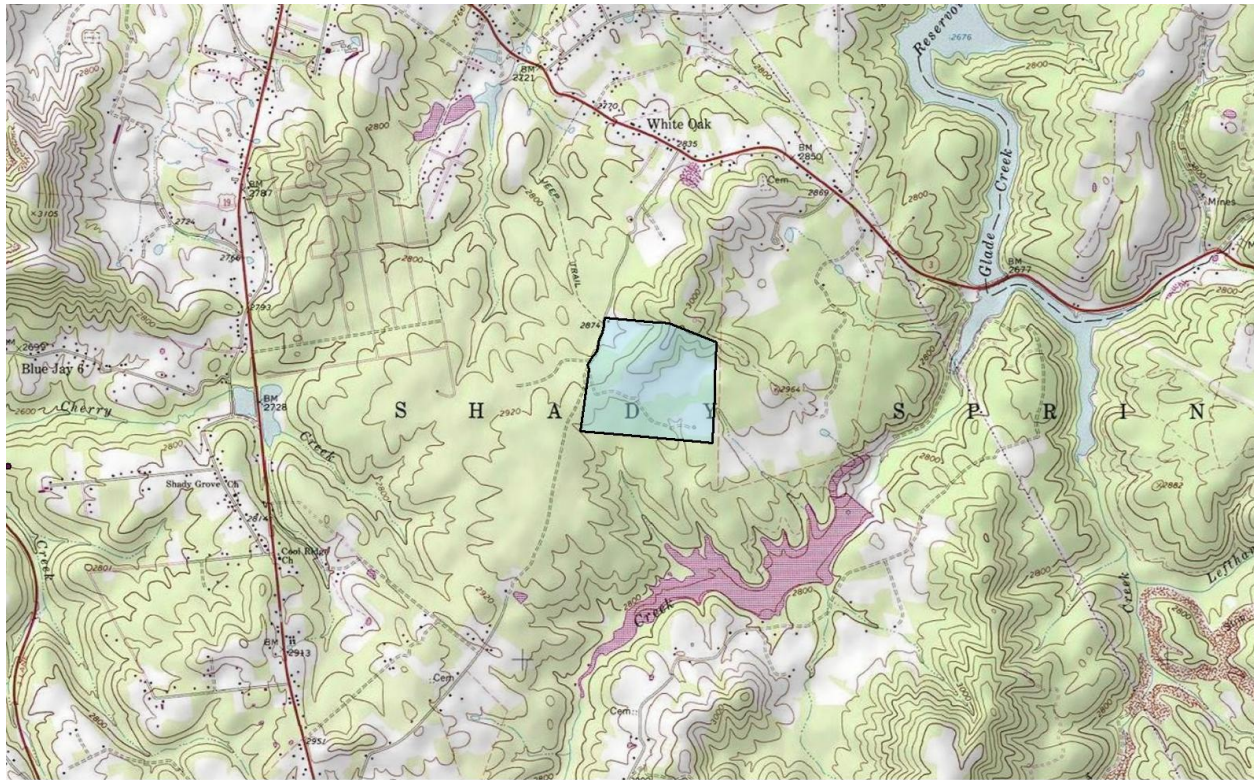


41-08-9999-0632-4113-0000

10.45 acres, minerals, L. Beaver Cr.

Raleigh/Shady Springs

DISCLAIMER: To better represent our property for marketability purposes, Elemental Resources uses ArcGIS to compile information from multiple sources. However, these maps and other information are only as accurate as the source of such maps and other information. Furthermore some of the tax maps and shape files might be outdated and therefore may not reflect the most current information. Elemental Resources makes no warranty, representation, or guarantee of any kind regarding either any maps or other information provided herein or the sources of such maps or other information. Elemental Resources specifically disclaims all representations or warranties expressed or implied, including without limitation, the implied warranties of merchantability and fitness for a particular purpose. Elemental Resources assumes no liability either for any errors, omissions, or inaccuracies in the information provided, regardless of the cause of such, or for any decision made, action not taken by the user in reliance upon any maps or information provided herein. Users of the information displayed in this map are strongly cautioned to verify all information before making any decision.

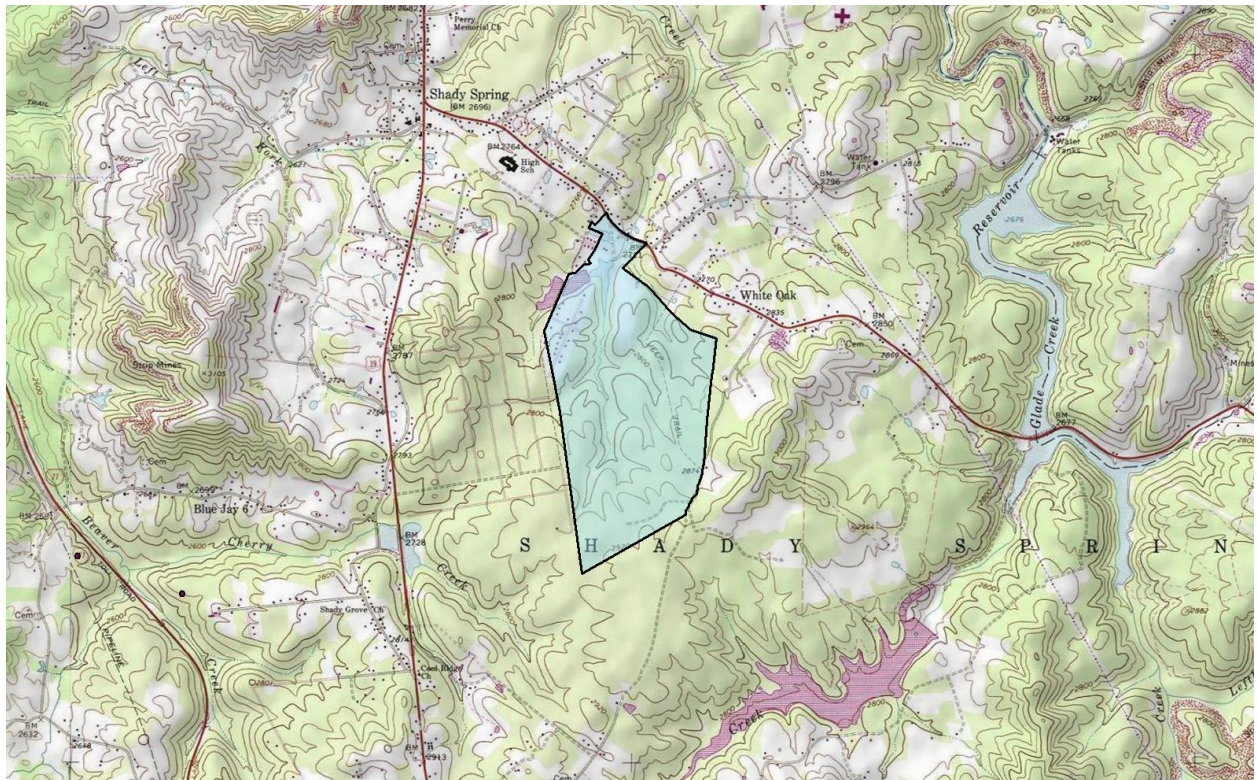


41-08-9999-0634-0694-0000

100 acres, coal, Glade Creek

Raleigh/Shady Springs

DISCLAIMER: To better represent our property for marketability purposes, Elemental Resources uses ArcGIS to compile information from multiple sources. However, these maps and other information are only as accurate as the source of such maps and other information. Furthermore some of the tax maps and shape files might be outdated and therefore may not reflect the most current information. Elemental Resources makes no warranty, representation, or guarantee of any kind regarding either any maps or other information provided herein or the sources of such maps or other information. Elemental Resources specifically disclaims all representations or warranties expressed or implied, including without limitation, the implied warranties of merchantability and fitness for a particular purpose. Elemental Resources assumes no liability either for any errors, omissions, or inaccuracies in the information provided, regardless of the cause of such or for any decision made, action not taken by the user in reliance upon any maps or information provided herein. Users of the information displayed in this map are strongly cautioned to verify all information before making any decision.



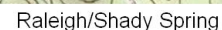
41-08-9999-0860-8826-0000

373.64 acres, coal, White Oak/L. Beaver Cr.

Raleigh/Shady Springs

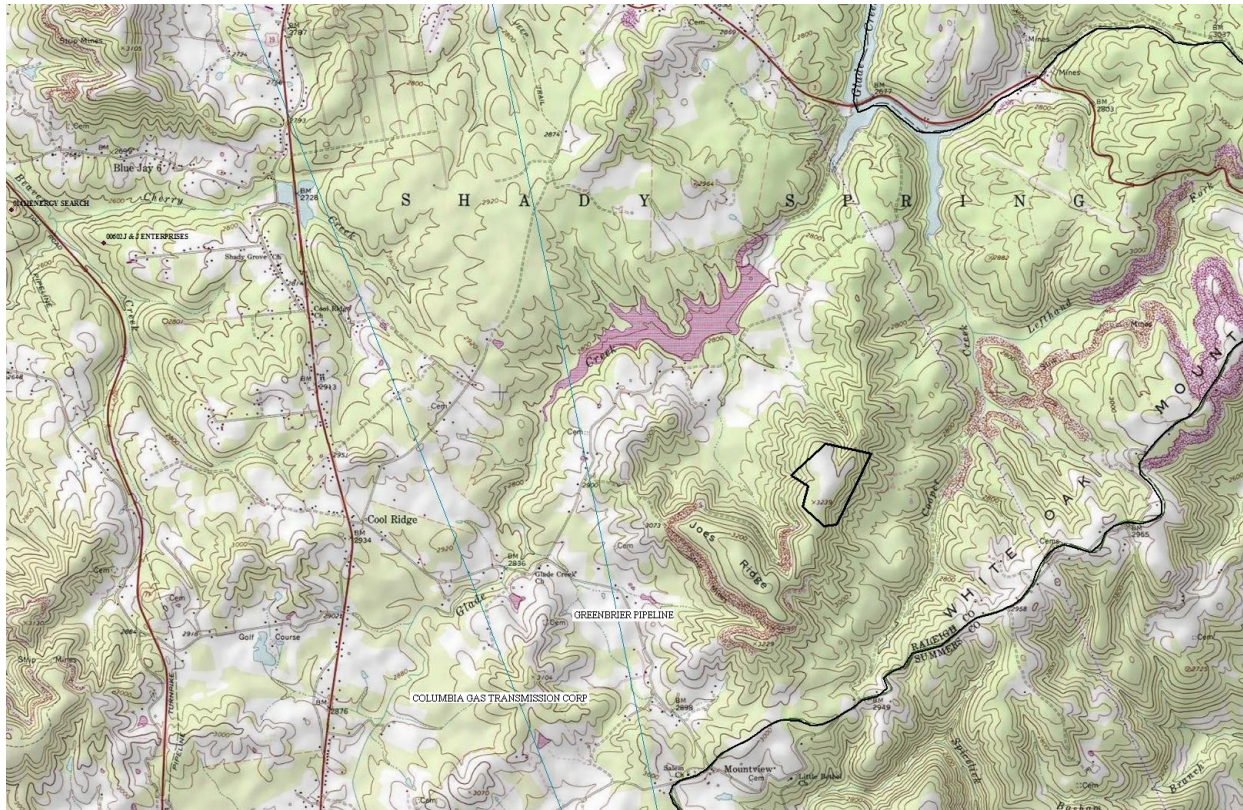
DISC
08/20
08/20
08/20
08/20

DISCLAIMER: To better represent our property for marketability purposes, Elemental Resources uses ArcGIS to compile information from multiple sources. However, these maps and other information are only as accurate as the source of such maps and other information. Furthermore, some of the tax maps and shape files might be outdated and therefore may not reflect the most current information. Elemental Resources makes no warranty, representation, or guarantee of any kind regarding either any maps or other information provided herein or the source of such maps or other information. Elemental Resources specifically disclaims all representations or warranties expressed or implied, including without limitation, the implied warranties of merchantability and fitness for a particular purpose. Elemental Resources assumes no liability either for any errors, omissions, or inaccuracies in the information provided, regardless of the cause of such or for any decision made, action not taken by the user in reliance upon any maps or information provided herein. Users of the information displayed in this map are strongly cautioned to verify all information before making any decision.



DISCLAIMER: To better represent our property for marketability purposes, Elemental Resources uses AutoCAD to compile information from multiple sources. However, these maps and other information are only as accurate as the source of source maps and other information. Furthermore some of our maps and shape files might be outdated and therefore may not reflect the most current information. Elemental Resources makes no warranty, representation, or guarantee of any kind regarding either any maps or other information provided here or the source of such maps or other information. Elemental Resources expressly disclaims all representations or warranties expressed or implied, in whole or in part, without limitation, the implied warranties of merchantability and fitness for a particular purpose. Elemental Resources assumes no liability either for any errors, omissions, or inaccuracies in the information provided, regardless of the cause of such or for any decision made, action not taken by a user in reliance upon any maps or information provided herein. Users of the information displayed in this map are strongly cautioned to verify all information before making any decision.

ELEMENTAL RESOURCES LLC 304-342-2192 1018 Kanawha Blvd E, Ste 300, Charleston, WV 25301 www.elementalresources.net



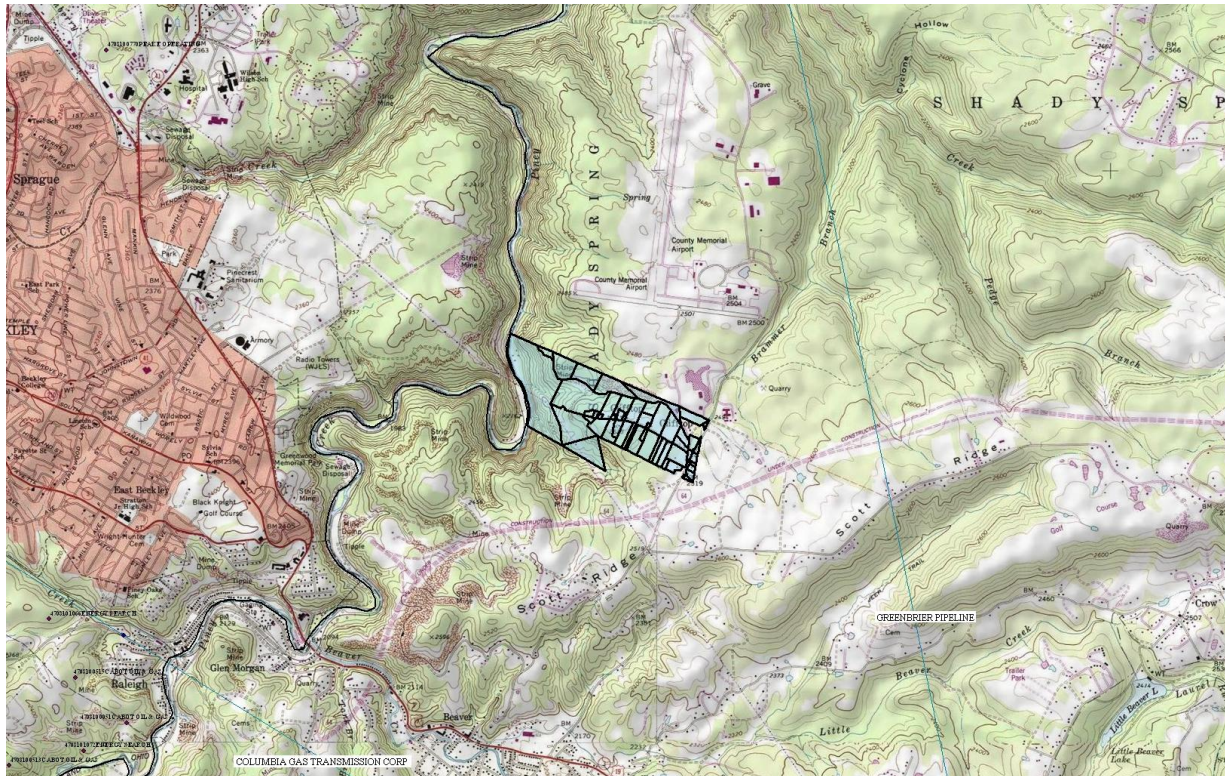
41-08-9999-0631-9343-0000

50 acres, minerals, Joes Ridge

Raleigh/Shady Spring

DISCLAIMER: To better represent our property for marketability purposes, Elemental Resources uses ArcGIS to compile information from multiple sources. However, these maps and other information are only as accurate as the source of such maps and other information. Furthermore some of the tax maps and shape files might be outdated and therefore may not reflect the most current information. Elemental Resources makes no warranty, representation, or guarantee of any kind regarding either any maps or other information provided herein or the sources of such maps or other information. Elemental Resources specifically disclaims all representations or warranties expressed or implied, including without limitation, the implied warranties of merchantability and fitness for a particular purpose. Elemental Resources assumes no liability either for any errors, omissions, or inaccuracies in the information provided, regardless of the cause of such, or for any decision made, action not taken by the user in reliance upon any maps or information provided herein. Users of the information displayed in this map are strongly cautioned to verify all information before making any decision.

ELEMENTAL RESOURCES LLC 304-342-2192 1018 Kanawha Blvd. E, Ste 309, Charleston, WV 25301 www.elementalresources.net



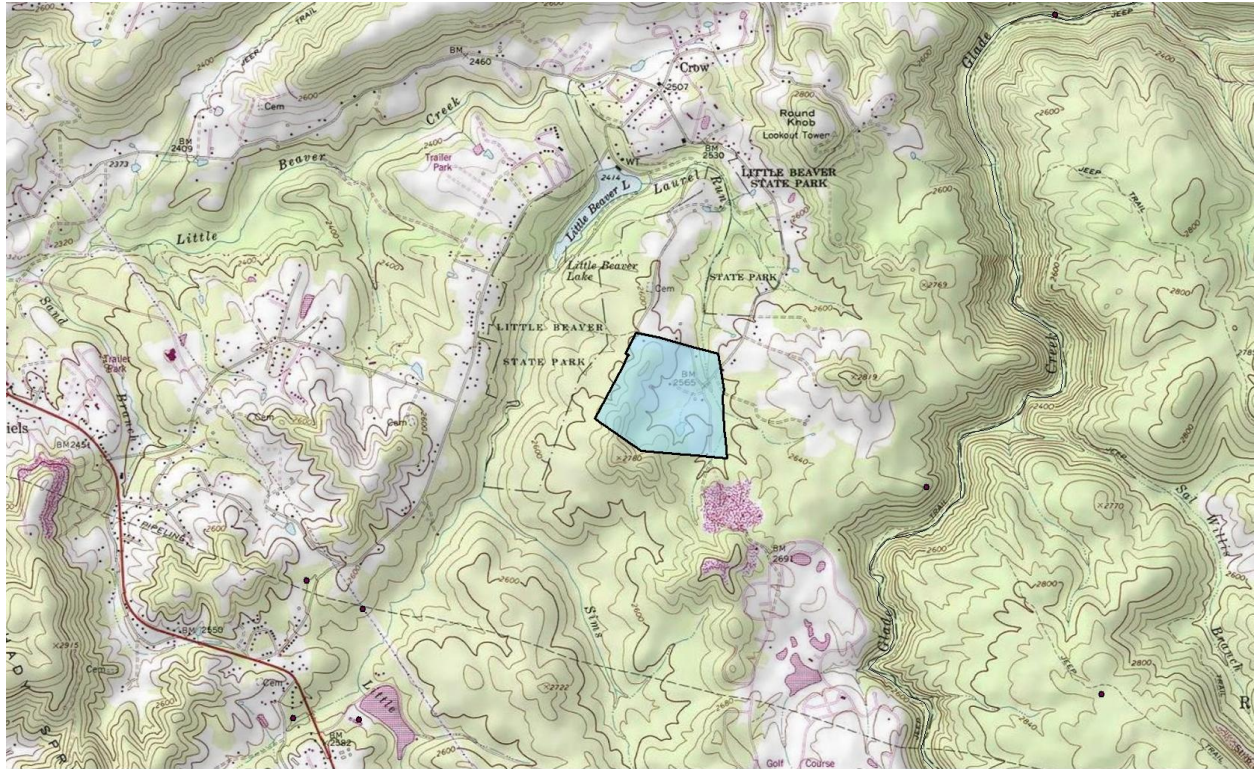
41-08-9999-0633-3559-0000
41-08-9999-0633-3540-0000
41-08-9999-0633-3568-0000

53+20.74+5.1 acres (220 shown), minerals, Beaver

Raleigh/Shady Spring

DISCLAIMER: To better represent our property for marketability purposes, Elemental Resources uses ArcGIS to compile information from multiple sources. However, these maps and other information are only as accurate as the source of such maps and other information. Furthermore some of the tax maps and shape files might be outdated and therefore may not reflect the most current information. Elemental Resources makes no warranty, representation, or guarantee of any kind regarding either any maps or other information provided herein or the sources of such maps or other information. Elemental Resources specifically disclaims all representations or warranties expressed or implied, including without limitation, the implied warranties of merchantability and fitness for a particular purpose. Elemental Resources assumes no liability either for any errors, omissions, or inaccuracies in the information provided, regardless of the cause of such or for any decision made, action not taken by the user in reliance upon any maps or information provided herein. Users of the information displayed in this map are strongly cautioned to verify all information before making any decision.

ELEMENTAL RESOURCES LLC 304-342-2192 1018 Kanawha Blvd. E, Ste 309, Charleston, WV 25301 www.elementalresources.net

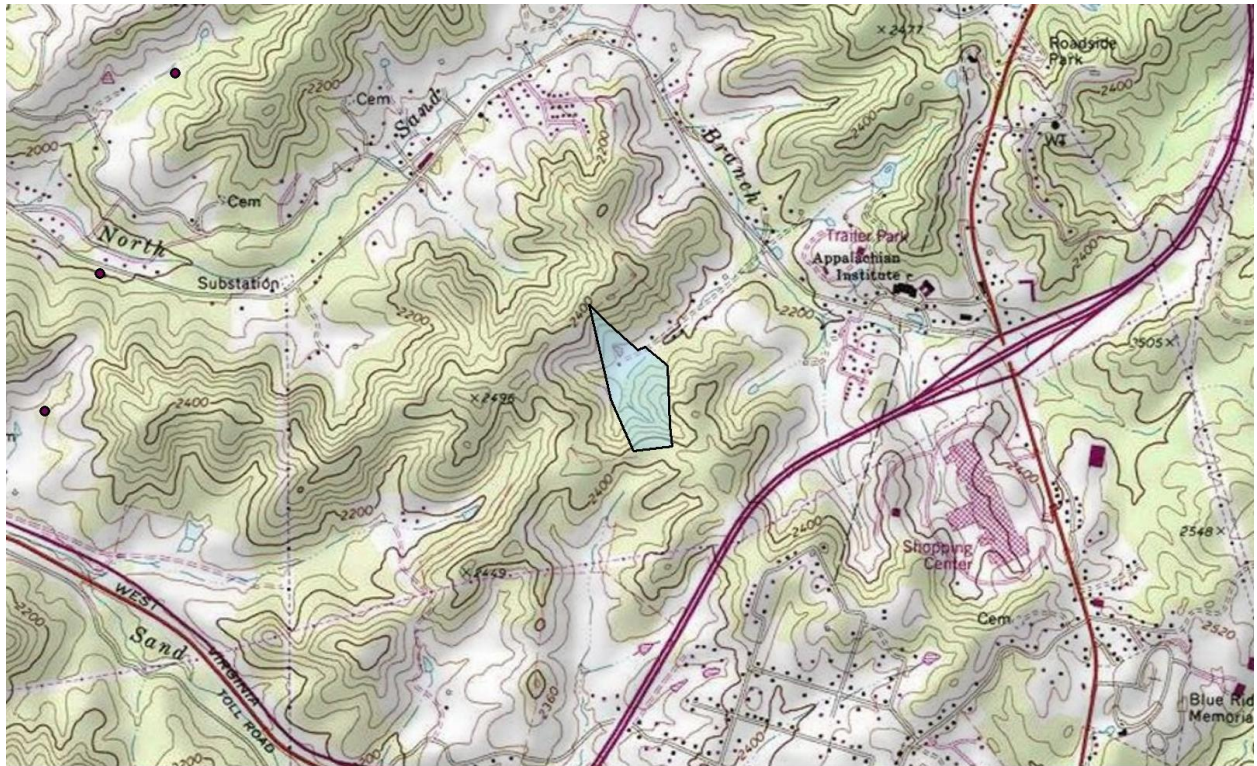


41-08-9999-0631-5560-0000

125 acres, minerals, Glade Cr

Raleigh/Shady Spring

DISCLAIMER: To better represent our property for marketability purposes, Elemental Resources uses ArcGIS to compile information from multiple sources. However, these maps and other information are only as accurate as the source of such maps and other information. Furthermore some of the tax maps and shape files might be outdated and therefore may not reflect the most current information. Elemental Resources makes no warranty, representation, or guarantee of any kind regarding either any maps or other information provided herein or the sources of such maps or other information. Elemental Resources specifically disclaims all representations or warranties expressed or implied, including without limitation, the implied warranties of merchantability and fitness for a particular purpose. Elemental Resources assumes no liability either for any errors, omissions, or inaccuracies in the information provided, regardless of the cause of such or for any decision made, action not taken by the user in reliance upon any maps or information provided herein. Users of the information displayed in this map are strongly cautioned to verify all information before making any decision.

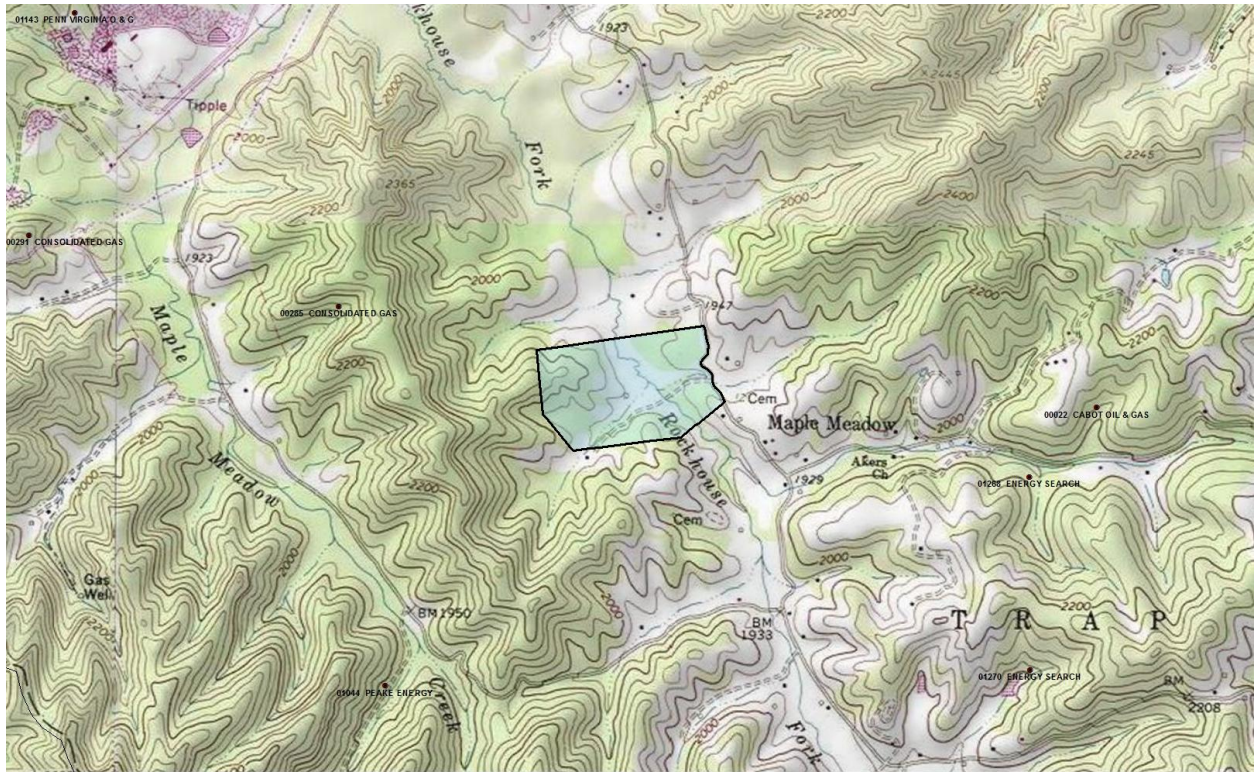


41-11-9999-0605-7483-0000

15 acres, minerals, Sand Br.

Raleigh/Town

DISCLAIMER: To better represent our property for marketability purposes, Elemental Resources uses ArcGIS to compile information from multiple sources. However, these maps and other information are only as accurate as the source of such maps and other information. Furthermore, some of the tax maps and shape files might be outdated and therefore may not reflect the most current information. Elemental Resources makes no warranty, representation, or guarantee of any kind regarding either any maps or other information provided herein or the sources of such maps or other information. Elemental Resources specifically disclaims all representations or warranties expressed or implied, including without limitation, the implied warranties of merchantability and fitness for a particular purpose. Elemental Resources assumes no liability either for any errors, omissions, or inaccuracies in the information provided, regardless of the cause of such or for any decision made, action not taken by the user in reliance upon any maps or information provided herein. Users of the information displayed in this map are strongly cautioned to verify all information before making any decision.
ELEMENTAL RESOURCES LLC 304-342-2192 1018 Kanawha Blvd. E, Ste 309, Charleston, WV 25301 www.elementalresources.net



41-12-9999-0640-1805-0000

66 acres, minerals, Rockhouse Fork

Raleigh/Trap Hill

DISCLAIMER: To better represent our property for marketability purposes, Elemental Resources uses ArcGIS to compile information from multiple sources. However, these maps and other information are only as accurate as the source of such maps and other information. Furthermore some of the tax maps and shape files might be outdated and therefore may not reflect the most current information. Elemental Resources makes no warranty, representation, or guarantees of any kind regarding either any maps or other information provided herein or the sources of such maps or other information. Elemental Resources specifically disclaims all representations or warranties expressed or implied, including without limitation, the implied warranties of merchantability and fitness for a particular purpose. Elemental Resources assumes no liability either for any errors, omissions, or inaccuracies in the information provided, regardless of the cause of such or for any decision made, action not taken by the user in reliance upon any maps or information provided herein. Users of the information displayed in this map are strongly cautioned to verify all information before making any decision.

ELEMENTAL RESOURCES LLC 304-342-2192 1018 Kanawha Blvd. E, Ste 308, Charleston, WV 25301 www.elementalresources.net