

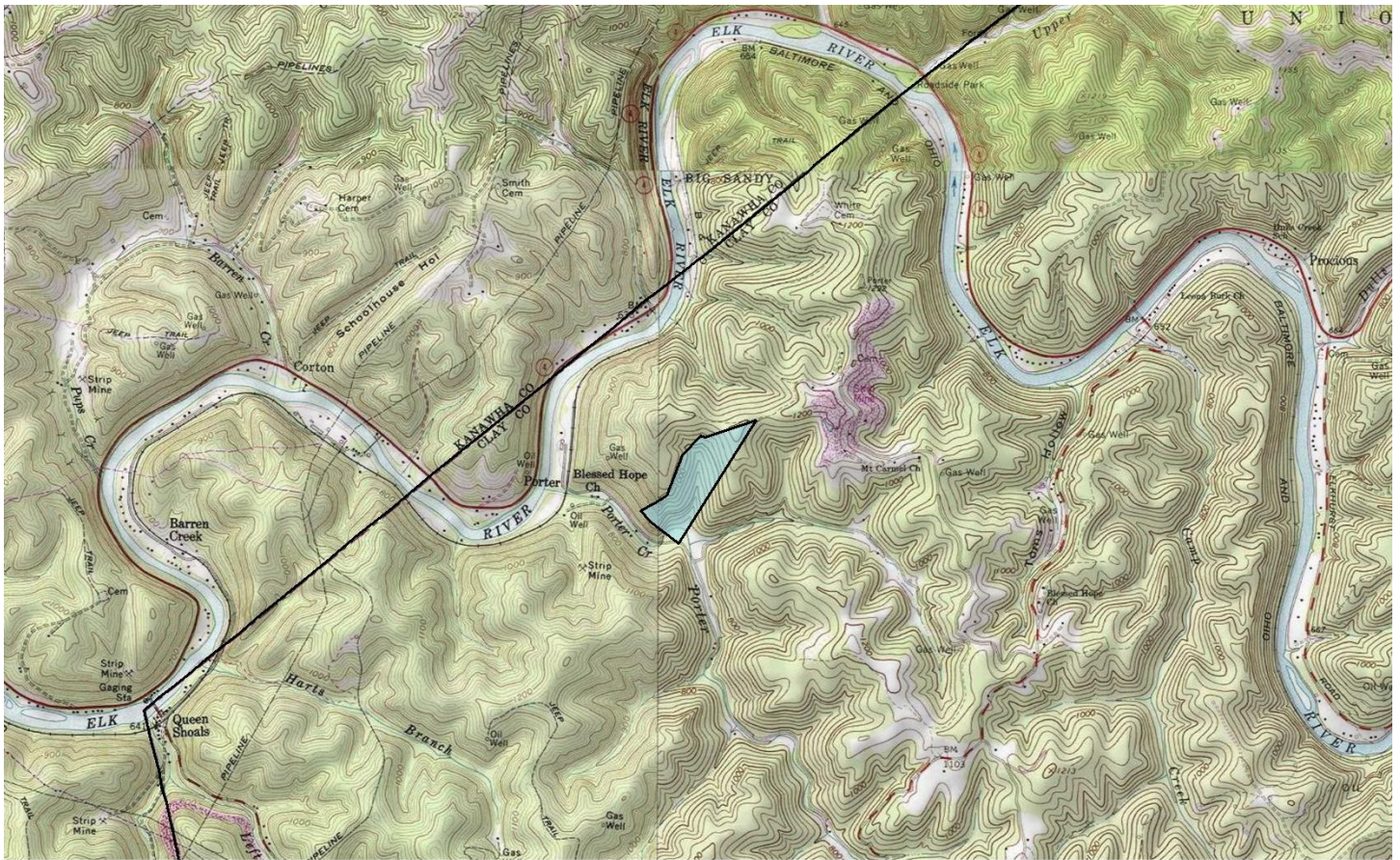
08-05-9999-0000-0460-0000

165 acres, coal, Big Sycamore Cr.

Clay/Pleasant

DISCLAIMER: To better represent our property for marketability purposes, Elemental Resources uses ArcGIS to compile information from multiple sources. However, these maps and other information are only as accurate as the source of such maps and other information. Furthermore some of the tax maps and shape files might be outdated and therefore may not reflect the most current information. Elemental Resources makes no warranty, representation, or guarantee of any kind regarding either any maps or other information provided herein or the sources of such maps or other information. Elemental Resources specifically disclaims all representations or warranties expressed or implied, including without limitation, the implied warranties of merchantability and fitness for a particular purpose. Elemental Resources assumes no liability either for any errors, omissions, or inaccuracies in the information provided, regardless of the cause of such or for any decision made, action not taken by the user in reliance upon any maps or information provided herein. Users of the information displayed in this map are strongly cautioned to verify all information before making any decision.

ELEMENTAL RESOURCES LLC 304-342-2192 1018 Kanawha Blvd. E, Ste 309, Charleston, WV 25301 www.elementalresources.net



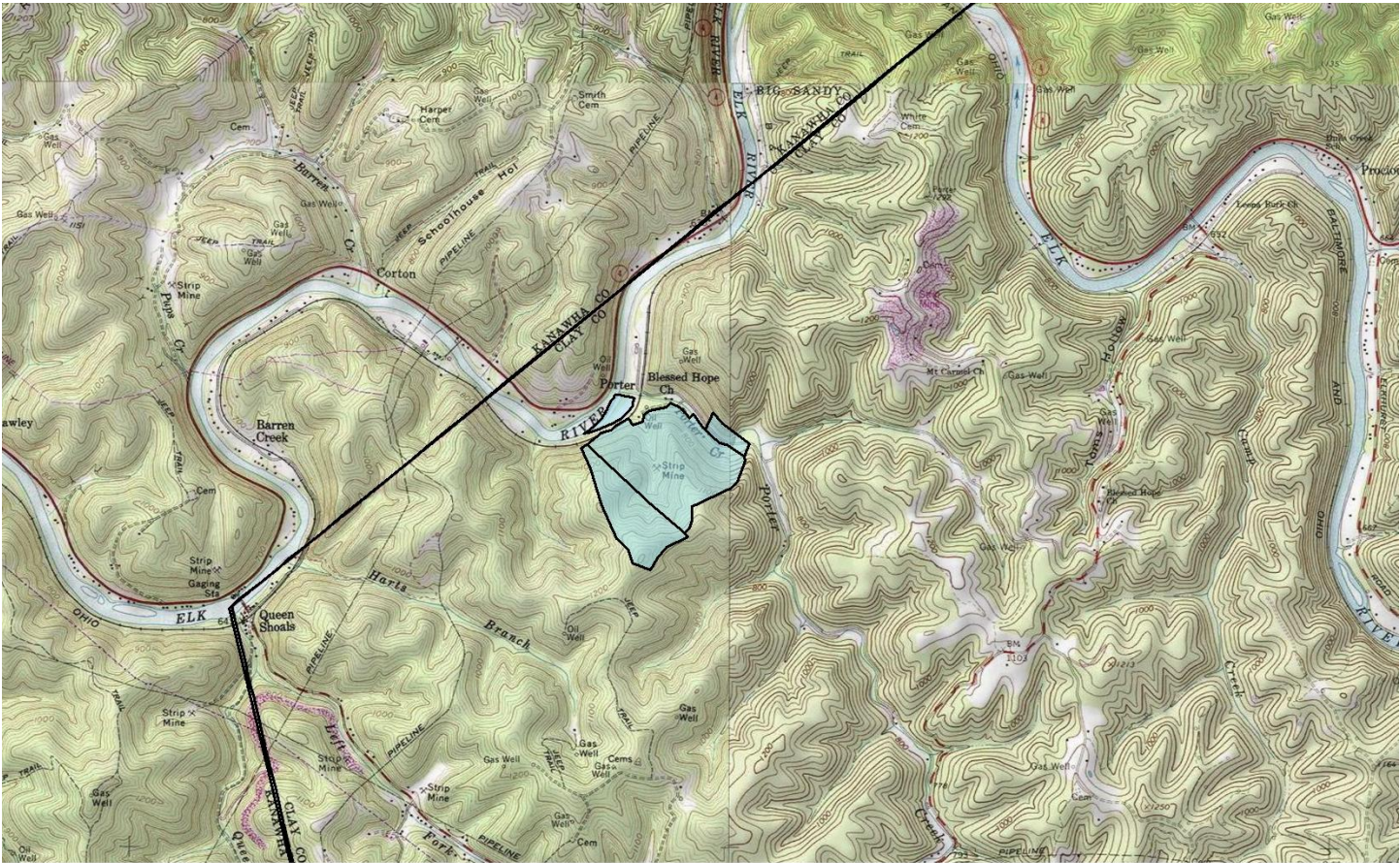
08-06-9999-0000-0012-0000

52.35 acres, coal, Elk River

Clay/Union

DISCLAIMER: To better represent our property for marketability purposes, Elemental Resources uses ArcGIS to compile information from multiple sources. However, these maps and other information are only as accurate as the source of such maps and other information. Furthermore some of the tax maps and shape files might be outdated and therefore may not reflect the most current information. Elemental Resources makes no warranty, representation, or guarantee of any kind regarding either any maps or other information provided herein or the sources of such maps or other information. Elemental Resources specifically disclaims all representations or warranties expressed or implied, including without limitation, the implied warranties of merchantability and fitness for a particular purpose. Elemental Resources assumes no liability either for any errors, omissions, or inaccuracies in the information provided, regardless of the cause of such or for any decision made, action not taken by the user in reliance upon any maps or information provided herein. Users of the information displayed in this map are strongly cautioned to verify all information before making any decision.

ELEMENTAL RESOURCES LLC 304-342-2192 1018 Kanawha Blvd. E, Ste 309, Charleston, WV 25301 www.elementalresources.net



08-06-9999-0000-0014-0000

156 acres, coal, Elk River

Clay/Union

DISCLAIMER: To better represent our property for marketability purposes, Elemental Resources uses ArcGIS to compile information from multiple sources. However, these maps and other information are only as accurate as the source of such maps and other information. Furthermore some of the tax maps and shape files might be outdated and therefore may not reflect the most current information. Elemental Resources makes no warranty, representation, or guarantee of any kind regarding either any maps or other information provided herein or the sources of such maps or other information. Elemental Resources specifically disclaims all representations or warranties expressed or implied, including without limitation, the implied warranties of merchantability and fitness for a particular purpose. Elemental Resources assumes no liability either for any errors, omissions, or inaccuracies in the information provided, regardless of the cause of such or for any decision made, action not taken by the user in reliance upon any maps or information provided herein. Users of the information displayed in this map are strongly cautioned to verify all information before making any decision.

ELEMENTAL RESOURCES LLC 304-342-2192 1018 Kanawha Blvd. E, Ste 309, Charleston, WV 25301 www.elementalresources.net

DISCLAIMER: To better represent our property for marketability purposes, Elemental Resources uses ArcGIS to compile information from multiple sources. However, these maps and other information are only as accurate as the source of such data and other information. Furthermore some of the tax maps and shape files might be outdated and therefore may not reflect the most current information. Elemental Resources makes no warranty, representation, or guarantee of any kind regarding either any maps or other information provided herein or the sources of such maps or other information. Elemental Resources specifically disclaims all representations or warranties expressed or implied, including without limitation, the implied warranties of merchantability and fitness for a particular purpose. Elemental Resources assumes no liability either for any errors, omissions, or inaccuracies in the information provided, regardless of the cause of such or for any decision made, action not taken by the user in reliance upon any maps or information provided herein. Users of the information displayed in this map are strongly cautioned to verify all information before making any decision.

ELEMENTAL RESOURCES LLC 304-342-2192 1018 Kanawha Blvd E, Ste 309, Charleston, WV 25301 www.elementalresources.net

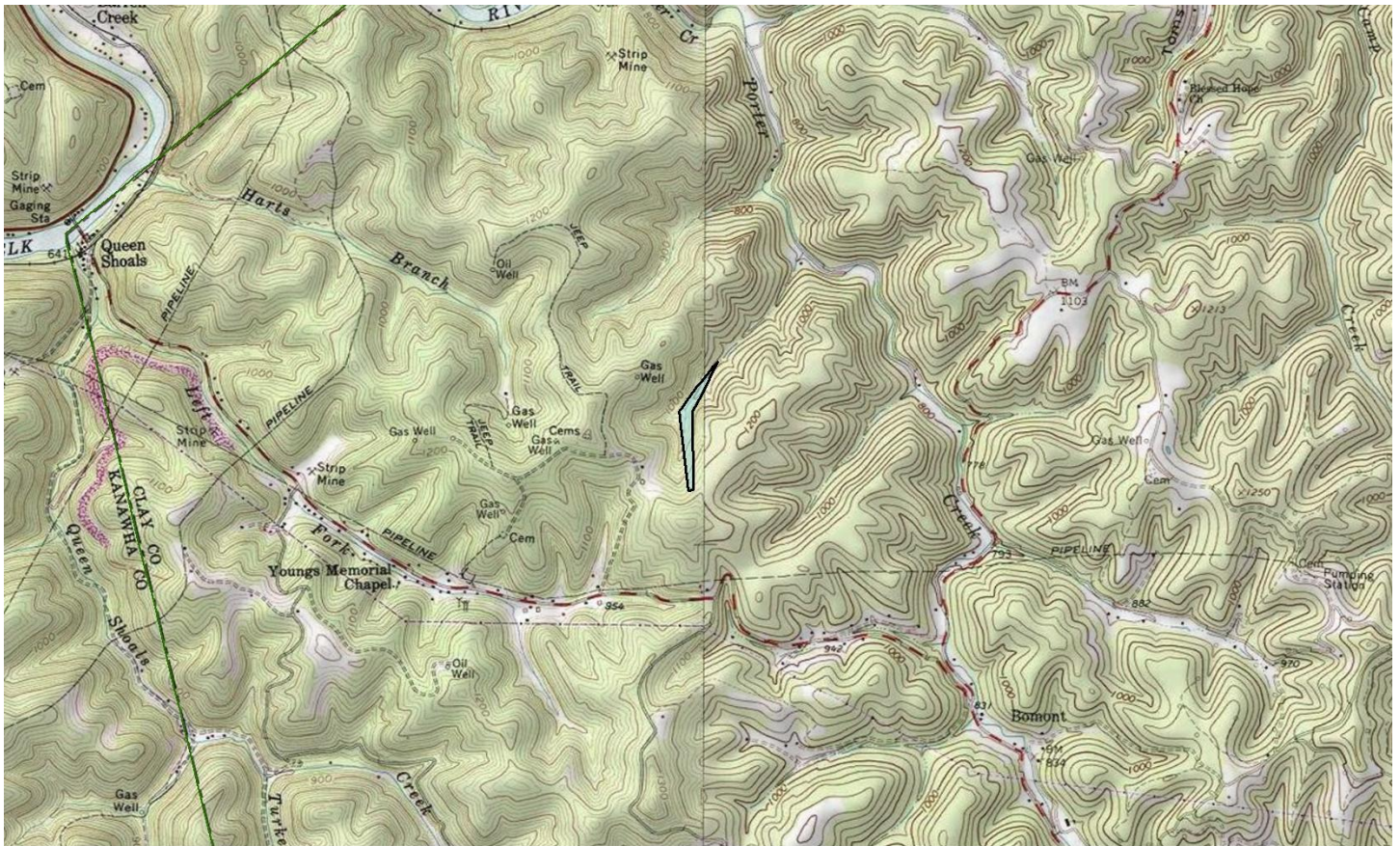


08-06-9999-0000-0228-0000

129 acres, coal, Elk River

Clay/Union

DISCLAIMER: To better represent our property for marketability purposes, Elemental Resources uses ArcGIS to compile information from multiple sources. However, these maps and other information are only as accurate as the source of such maps and other information. Furthermore some of the tax maps and shape files might be outdated and therefore may not reflect the most current information. Elemental Resources makes no warranty, representation, or guarantee of any kind regarding either any maps or other information provided herein or the sources of such maps or other information. Elemental Resources specifically disclaims all representations or warranties expressed or implied, including without limitation, the implied warranties of merchantability and fitness for a particular purpose. Elemental Resources assumes no liability either for any errors, omissions, or inaccuracies in the information provided, regardless of the cause of such or for any decision made, action not taken by the user in reliance upon any maps or information provided herein. Users of the information displayed in this map are strongly cautioned to verify all information before making any decision.



08-06-9999-0000-1101-0000

8 acres, coal, Blue Creek

Clay/Union

DISCLAIMER: To better represent our property for marketability purposes, Elemental Resources uses ArcGIS to compile information from multiple sources. However, these maps and other information are only as accurate as the source of such maps and other information. Furthermore some of the tax maps and shape files might be outdated and therefore may not reflect the most current information. Elemental Resources makes no warranty, representation, or guarantee of any kind regarding either any maps or other information provided herein or the sources of such maps or other information. Elemental Resources specifically disclaims all representations or warranties expressed or implied, including without limitation, the implied warranties of merchantability and fitness for a particular purpose. Elemental Resources assumes no liability either for any errors, omissions, or inaccuracies in the information provided, regardless of the cause of such or for any decision made, action not taken by the user in reliance upon any maps or information provided herein. Users of the information displayed in this map are strongly cautioned to verify all information before making any decision.

ELEMENTAL RESOURCES LLC 304-342-2192 1018 Kanawha Blvd. E, Ste 309, Charleston, WV 25301 www.elementalresources.net

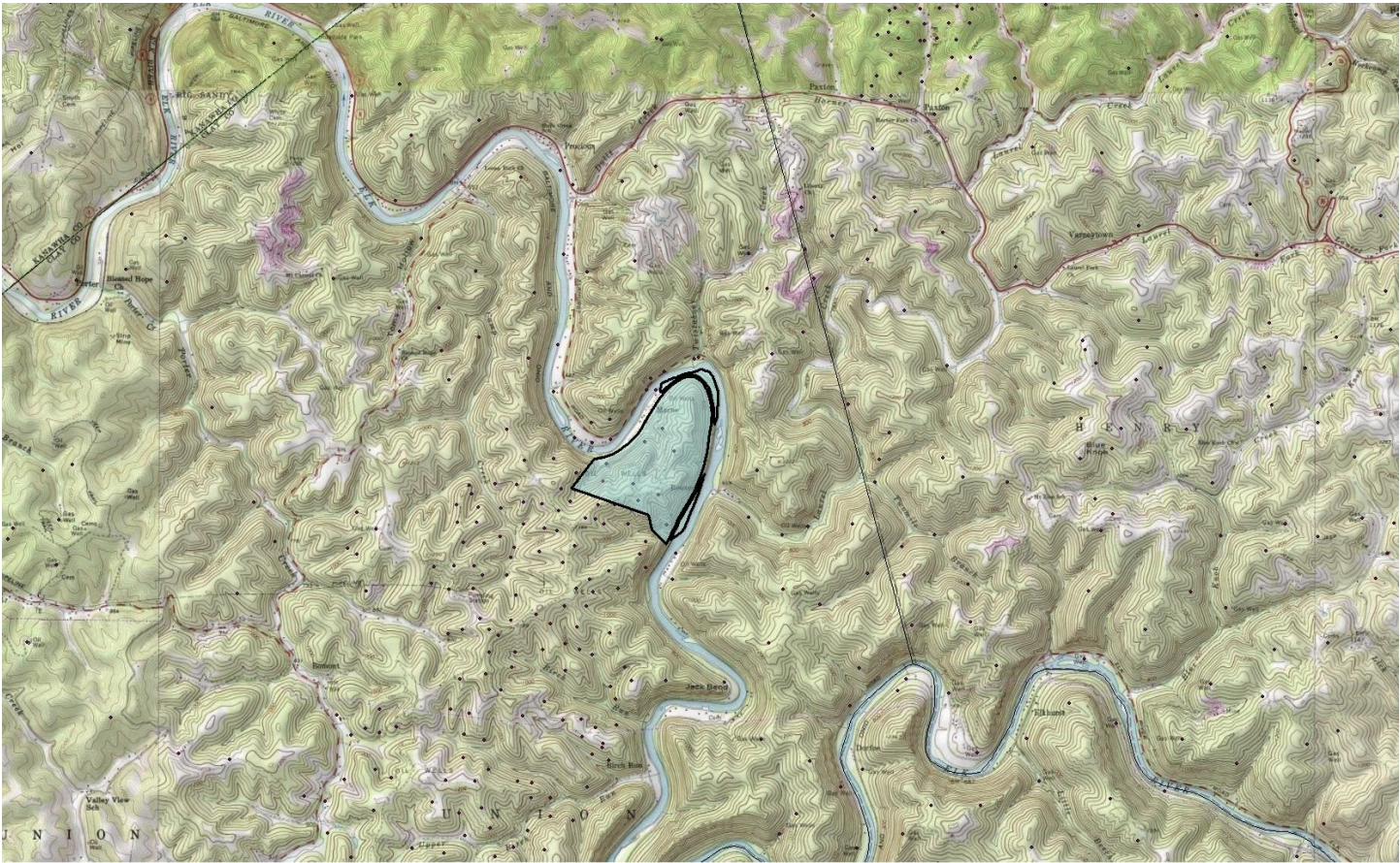


08-06-9999-0000-1102-0000

50 acres, coal, Elk River

Clay/Union

DISCLAIMER: To better represent our property for marketability purposes, Elemental Resources uses ArcGIS to compile information from multiple sources. However, these maps and other information are only as accurate as the source of such maps and other information. Furthermore some of the tax maps and shape files might be outdated and therefore may not reflect the most current information. Elemental Resources makes no warranty, representation, or guarantee of any kind regarding either any maps or other information provided herein or the sources of such maps or other information. Elemental Resources specifically disclaims all representations or warranties expressed or implied, including without limitation, the implied warranties of merchantability and fitness for a particular purpose. Elemental Resources assumes no liability either for any errors, omissions, or inaccuracies in the information provided, regardless of the cause of such or for any decision made, action not taken by the user in reliance upon any maps or information provided herein. Users of the information displayed in this map are strongly cautioned to verify all information before making any decision.



08-06-9999-0000-1103-0000

358 acres, coal, Elk River

Clay/Union

DISCLAIMER: To better represent our property for marketability purposes, Elemental Resources uses ArcGIS to compile information from multiple sources. However, these maps and other information are only as accurate as the source of such maps and other information. Furthermore some of the tax maps and shape files might be outdated and therefore may not reflect the most current information. Elemental Resources makes no warranty, representation, or guarantee of any kind regarding either any maps or other information provided herein or the sources of such maps or other information. Elemental Resources specifically disclaims all representations or warranties expressed or implied, including without limitation, the implied warranties of merchantability and fitness for a particular purpose. Elemental Resources assumes no liability either for any errors, omissions, or inaccuracies in the information provided, regardless of the cause of such or for any decision made, action not taken by the user in reliance upon any maps or information provided herein. Users of the information displayed in this map are strongly cautioned to verify all information before making any decision.